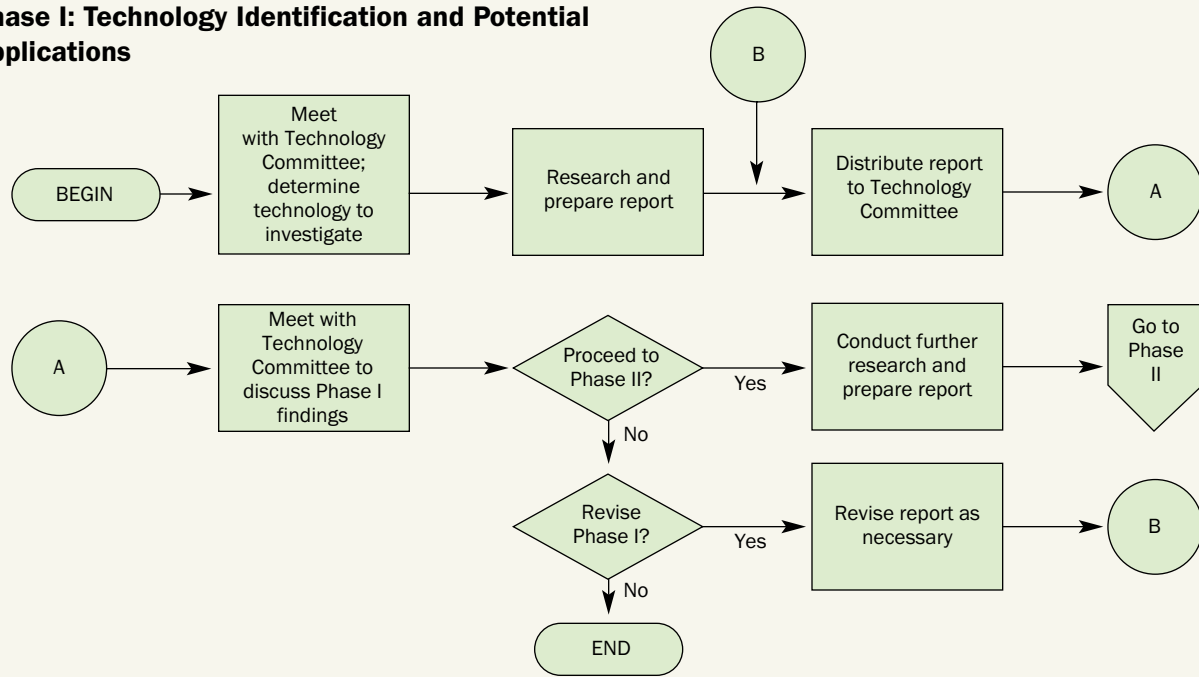
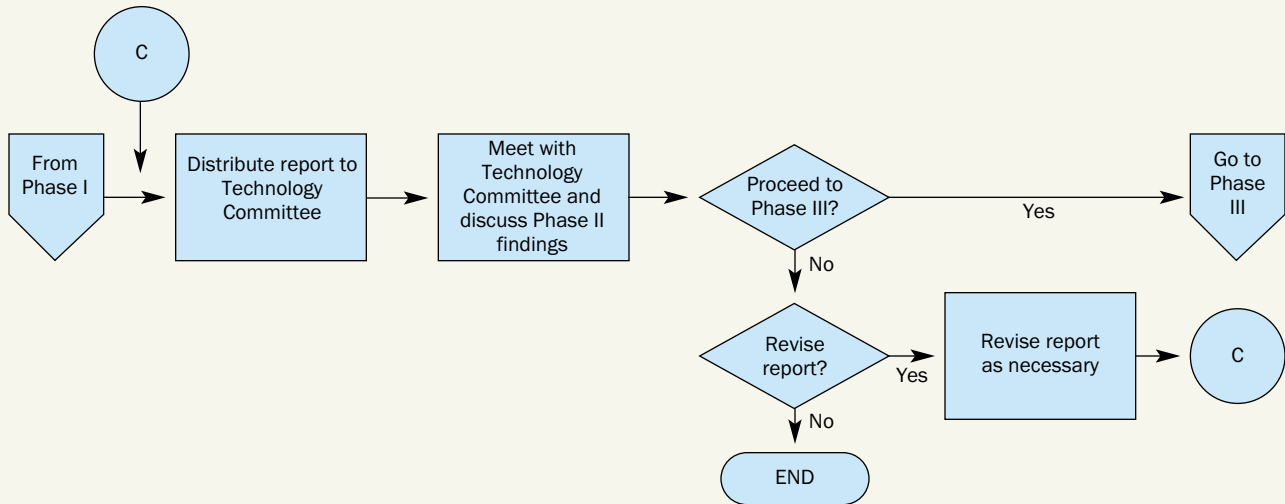


# FHS TECHNOLOGY ASSESSMENT MODEL WORKFLOW (1992)\*

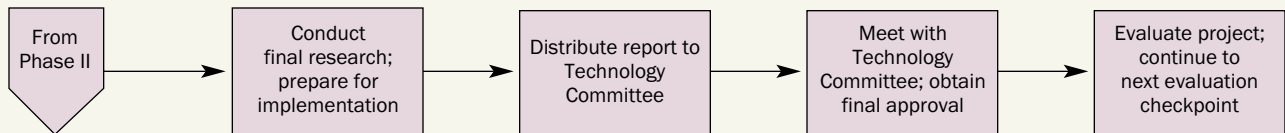
## Phase I: Technology Identification and Potential Applications



## Phase II: Technology Assessment and Recommendations



## Phase III: Technology Implementation



\*These actions are taken by a technology investigator, or "champion." The Technology Committee reviews the analyses and makes recommendations.