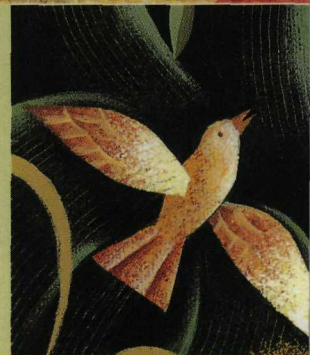


CHA Board of Trustees

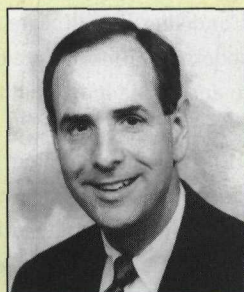
Pictured here are the members of the CHA Board of Trustees for 1999-2000. Members who were elected or reelected at the June 8 membership assembly are marked with an asterisk.



Chairperson
Michael D. Connelly
 President/Chief Executive Officer
 Catholic Healthcare Partners
 Cincinnati, OH



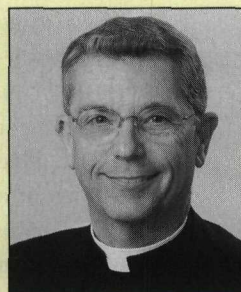
Vice Chairperson
Sr. Phyllis Hughes, RSM
 Vice President, Healthy Community
 Initiatives, Mercy Housing, Inc.
 San Francisco, CA



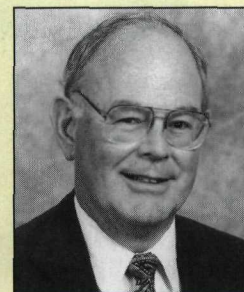
Secretary-Treasurer
Michael F. Collins, MD
 President/Chief Executive Officer
 Caritas Christi Health Care System
 Boston, MA



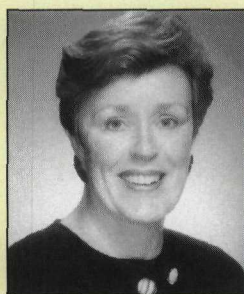
Speaker, Membership Assembly
Sr. Doris Gottemoeller, RSM
 Corporate Member
 Catholic Healthcare Partners
 Cincinnati, OH



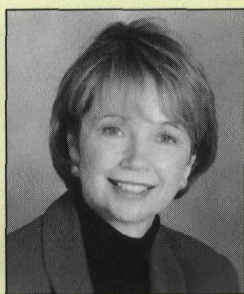
President
Rev. Michael D. Place, STD
 President/Chief Executive Officer, Catholic
 Health Association of the United States
 St. Louis, MO



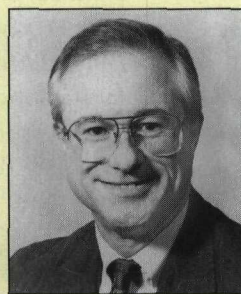
***John R. Burgis**
 Senior Vice President, Financial Services,
 and Chief Financial Officer
 Catholic Healthcare West
 San Francisco, CA



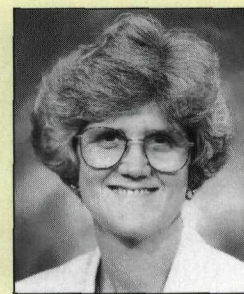
Patricia A. Cahill, JD
 President/Chief Executive Officer
 Catholic Health Initiatives
 Denver, CO



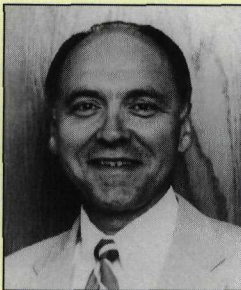
Jane J. Chiles
 Executive Director
 Catholic Conference of Kentucky
 Frankfort, KY



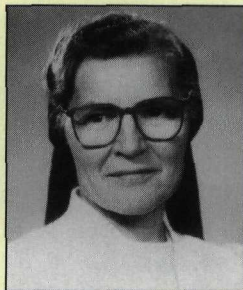
Charles J. Dougherty, PhD
 Vice President, Academic Affairs
 Creighton University
 Omaha, NE



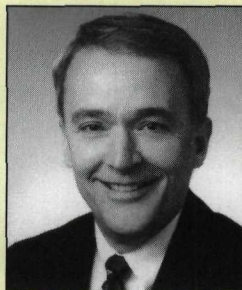
Sr. Patricia Eck, CBS
 Chairperson of the Board
 Bon Secours Health System, Inc.
 Marriottsville, MD



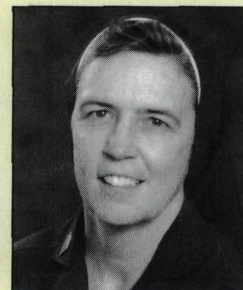
Brian E. Forschner, PhD
 President, Senior Health and Housing
 Mercy Franciscan at Winton Woods
 Cincinnati, OH



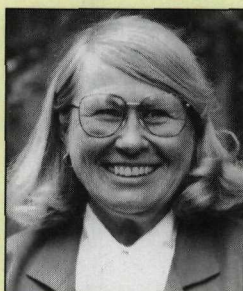
Sr. M. Therese Gottschalk, SSM
 President
 Marian Health System
 Tulsa, OK



***C. Gregg Hanson**
 Group President
 Catholic Health Initiatives
 Bloomington, MN



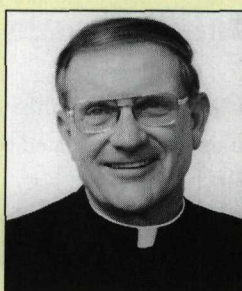
***Sr. Carol Keehan, DC**
 President/Chief Executive Officer
 Providence Hospital
 Washington, DC



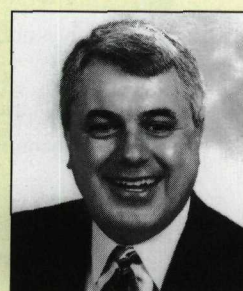
Else Marie Kiefer
 Consultant
 Catholic Healthcare West
 San Francisco, CA



Sr. Jane Marie Klein, OSF
 Chairperson
 Sisters of St. Francis Health Services, Inc.
 Mishawaka, IN



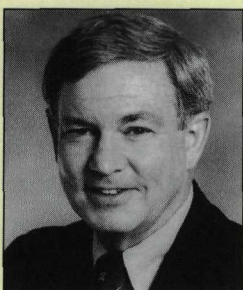
Bp. John J. Leibrecht, DD, PhD
 Bishop of Springfield-Cape Girardeau
 Springfield, MO



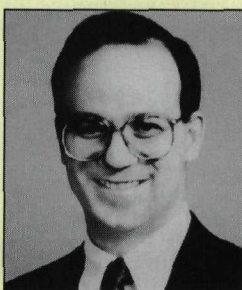
John S. Lore, PhD
 President/Chief Executive Officer
 Sisters of St. Joseph Health System
 Ann Arbor, MI



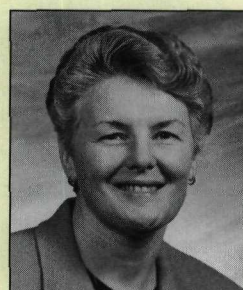
Sr. Kathleen Mulchay, SSCM
 Provincial Superior
 Servants of the Holy Heart of Mary
 Kankakee, IL



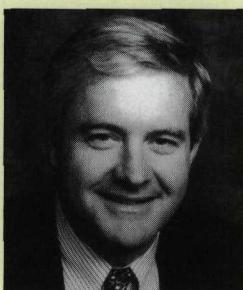
***P. Terrence O'Rourke, MD**
 Board Chairperson
 Centura Health
 Colorado Springs, CO



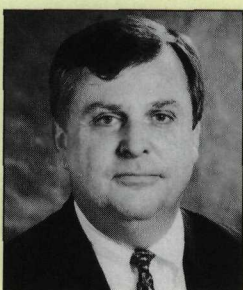
Richard J. Statuto
 President/Chief Executive Officer
 St. Joseph Health System
 Orange, CA



***Sr. Patricia Vandenberg, CSC**
 President/Chief Executive Officer
 Holy Cross Health System Corporation
 South Bend, IN



***Greg Van Pelt**
 Chief Executive
 Providence Health Plans
 Portland, OR



Howard W. Watts
 Executive Vice President
 Catholic Health East, Southeast Division
 Tampa, FL



***Sr. St. Joan Willert, CSJ**
 President
 Carondelet Health Network
 Tucson, AZ

See you next year at
 the 85th Catholic
 Health Assembly in
 San Francisco
 June 11-14, 2000