



Catholic Health Strategy Summit: Integrating Services for Seniors

Dale M. Thompson
President/CEO
Benedictine Health System



Our Vision

*“Creating Benedictine Living Communities where health,
independence and choice come to life”*



Our Mission and Core Values

The Benedictine Health System is a Catholic organization entrusted with advancing the health care ministry of the Benedictine Sisters of Duluth, Minnesota. Our mission is to witness to God's love by providing compassionate quality care with special concern for the underserved and those in need.

Hospitality Stewardship Respect Justice

3



The BHS Strategic Imperatives

- Grow our Mission and Vision
- Anticipate customer expectations...create the market
- Advance new services, system and technologies
- Expand Values-Centered Leadership
- Engage our committed workforce
- Strengthen financial sustainability
- Align resources, effort and strategy

4

Benedictine Health System...the past



- 70+ LTC facilities...40 campuses/communities
- 4,000 Nursing Facility Beds, traditional nursing facility/ short-stay/rehab services
- 2,000 Housing with Services Units/Assisted Living
- Care at Home – Minimal
- End-of-Life Care – Incorporated in Nursing Facility Program
- Payment Based on per diem rates, Medicaid 15% Medicare LTC

5

Benedictine Health System...the future



- 80+ LTC facilities...50 campuses/communities
- 3,000 Nursing Facility Beds...focus on post-acute care, aligned with integrated hospital/health care systems...30% of capacity – 60% of revenue
- 3,000 Housing with Services Units
- Care at Home – 1,500 served
 - Model...strong care coordination, aligned with Diocese/Parish Model of informal care support
 - PACE

6

Benedictine Health System...the future



- Small House Concept
 - Traditional nursing facility care
 - Specialized care –
 - End-of-Life Care
 - Memory Care
 - Subcontracting of risk as post-acute/LTC partner

7

Benedictine Health System...the future



- At Risk/Integration of Payment
 - Medicare/Medicaid dual eligibles...various state-based programs
 - Accountable care organization partnerships (ACOs)
 - PACE
 - Subcontracting of risk as post-acute/LTC partner
- Enhanced Partnerships; hospital/health systems; Catholic Health Care providers; Catholic Diocese

8

Capital Formation/Financial Sustainability

- Sustained system financial performance required
- Strategic Capital Fund & Strategy
 - Equity Pool
 - Philanthropy
 - Debt/Leverage

9

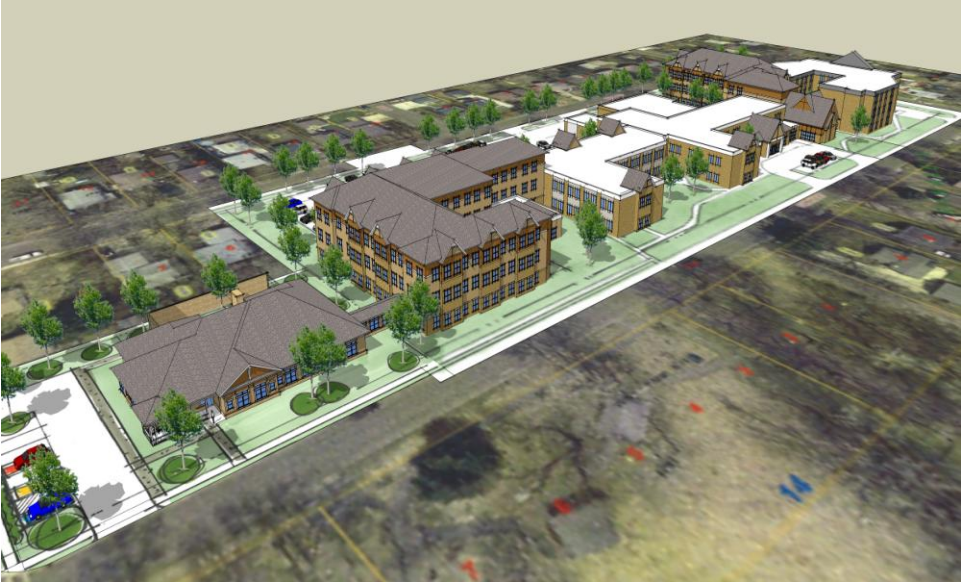
St. Mary's Care Center Small House

The Garden House



10

Cerency-White Bear Lake Small House



11

Client: The Individuals Care at Home will serve...

