



# Environmental Stewardship: Connecting Catholic Social Teaching, Triple Bottom Line and Triple Aim

Aug. 19, 2014  
1 – 2 p.m. ET

© 2014 by the Catholic Health Association of the United States



## Reflection for Today's Program

"To protect creation, to protect every man and every woman, to look upon them with tenderness and love, is to open up a horizon of hope; it is to let a shaft of light break through the heavy clouds; it is to bring the warmth of hope! For believers, for us Christians, like Abraham, like Saint Joseph, the hope that we bring is set against the horizon of God, which has opened up before us in Christ. It is hope built on the rock which is God."

Pope Francis  
Homily at the Mass, Imposition of the Pallium and Bestowal of the Fisherman's Ring  
for the beginning of the Petrine Ministry of the Bishop of Rome

© 2014 by the Catholic Health Association of the United States

2



## Your Speaker for Today's Program

**Lois Sechrist, LEED AP ID+C**

Senior Analyst  
Facilities Resource Group  
Ascension Health  
St. Louis

**Lois Sechrist, LEED AP ID+C**, is responsible for the Ascension Health Environmental Stewardship Program, including sharing of best practices throughout the system's health ministries. Ms. Sechrist has a background in interior architecture and project management. She has taught the LEED Green Associate exam preparation course for the USGBC – Missouri Gateway Chapter for several years and is chair of the University City, Mo., Green Practices Commission.



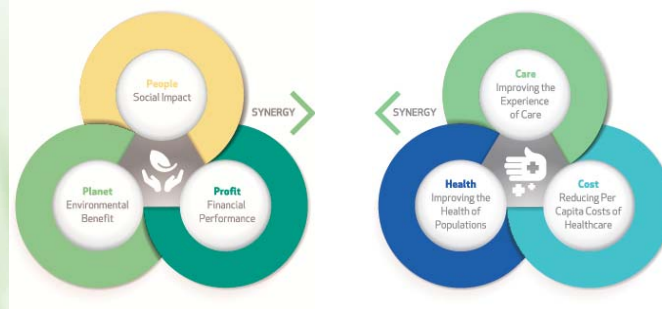
## Your Speaker for Today's Program

**Eric Buzzell**

Vice President, General Services & Property Management  
Borgess Medical Center  
Kalamazoo, Mich.

**Eric Buzzell** is vice president of general services and property management for Borgess Medical Center, Kalamazoo, Mich. He holds operational leadership for all environment of care departments and programs within a 364-bed medical center; property management of an integrated health system of three hospitals, one nursing home, 16 ambulatory care clinics/health and fitness locations and operation of a health care laundry/linen distribution company serving over 40 clients across southern, lower Michigan.

## Environmental Stewardship: Connecting Catholic Social Teaching, Triple Bottom Line and Triple Aim




August 19, 2014



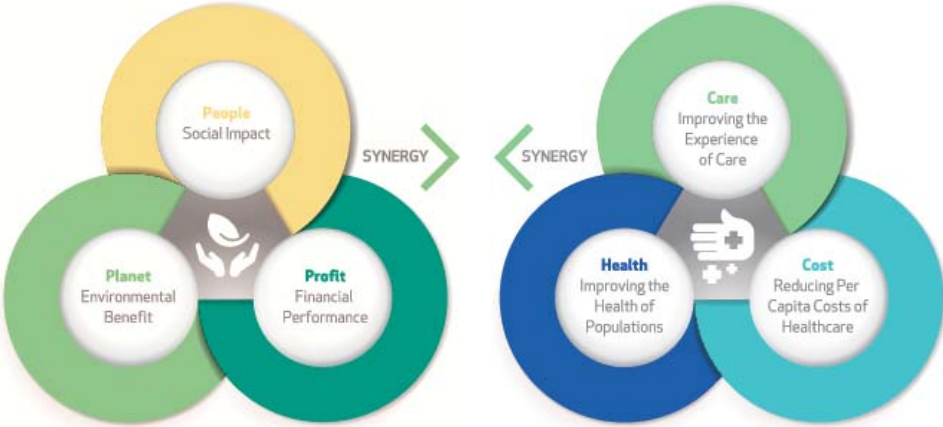
### Objectives

- Connect Catholic Social Teaching, the Triple Bottom Line and the Triple Aim through an environmental stewardship program
- Review multiple project types using this lens
  - Patient Care (People)
  - Population Health (Planet)
  - Per Capita Cost (Profit)
- Learn to use cost avoidance metrics from specific initiatives to direct funds to the core Mission of providing healthcare services

6 August 19, 2014




## Triple Bottom Line Triple Aim

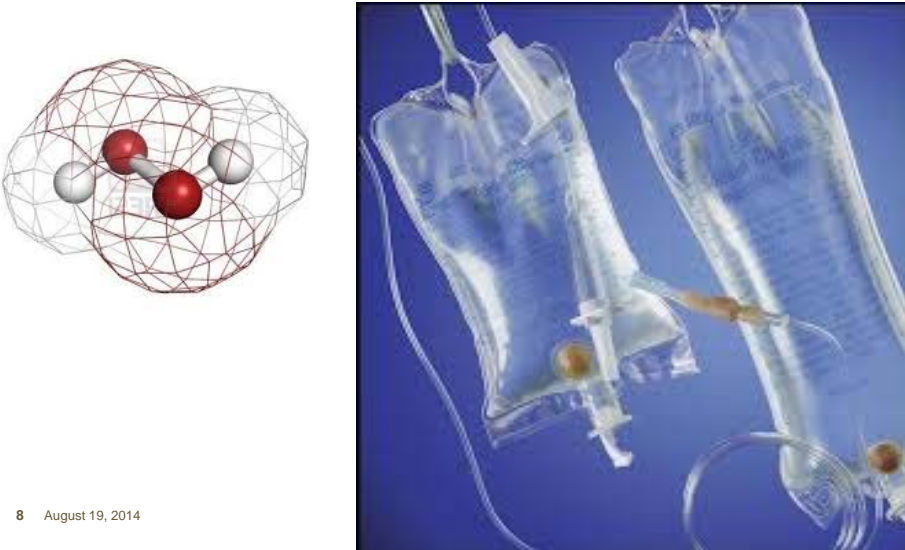


The diagram illustrates the transition from a Triple Bottom Line to a Triple Aim. On the left, the Triple Bottom Line consists of three overlapping circles: a yellow circle for 'People' (Social Impact), a green circle for 'Planet' (Environmental Benefit), and a teal circle for 'Profit' (Financial Performance). A central icon shows hands holding a leaf. A green arrow labeled 'SYNERGY' points to the right. On the right, the Triple Aim consists of three overlapping circles: a green circle for 'Care' (Improving the Experience of Care), a blue circle for 'Health' (Improving the Health of Populations), and a teal circle for 'Cost' (Reducing Per Capita Costs of Healthcare). A central icon shows a hand holding a medical cross. A green arrow labeled 'SYNERGY' points back to the left.

7 August 19, 2014



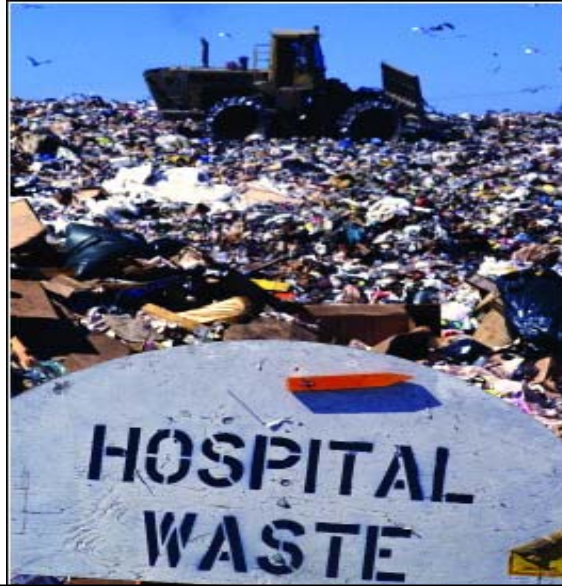
## Triple Bottom Line Triple Aim



The image features two distinct visual elements. On the left is a molecular model with a red wireframe sphere and several red and white spheres representing atoms. On the right is a photograph of two clear plastic IV drip chambers with white tubing, set against a blue background.

8 August 19, 2014

## Triple Bottom Line Triple Aim




9 August 19, 2014

## Triple Bottom Line Triple Aim



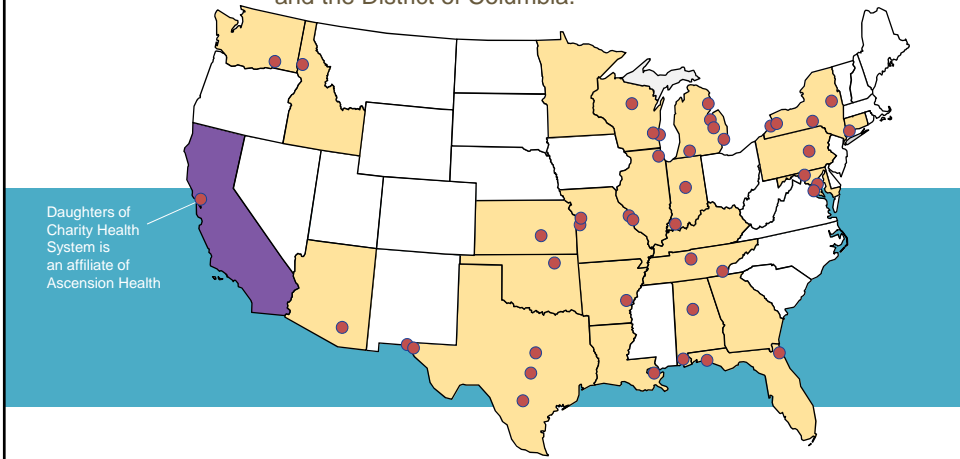
10 August 19, 2014

---



### Our System


Ascension Health is the largest Catholic health system, the largest private nonprofit system and the third largest system (based on revenues) in the United States, operating in 23 states and the District of Columbia.



Daughters of Charity Health System is an affiliate of Ascension Health

11 August 19, 2014

---



### Environmental Stewardship and the Ascension Health Mission

Rooted in the loving ministry of Jesus as healer, we commit ourselves to serving all persons with special attention to those who are poor and vulnerable.

Our Catholic health ministry is dedicated to spiritually centered, holistic care, which sustains and improves the **health of individuals and communities.**

We are advocates for a **compassionate and just society** through our actions and our words.

12 August 19, 2014



---

## Environmental Stewardship Program Vision Statement

The Environmental Stewardship Program challenges us to act as stewards of God's creation and operate at our full potential by identifying and implementing practical solutions to minimize the organization's impact on the natural environment and the communities we serve.

13 August 19, 2014



---

## Daughters of Charity Bottled Water + Social Justice



14 August 19, 2014



## Environmental Stewardship Program Categories

- Leadership and Infrastructure
- Education and Communication
- Energy Efficiency
- Water Conservation
- Waste Management and Reduction
- Environmentally Preferred Purchasing
- Sustainable Site and Transportation
- Chemical Management
- Food Systems

15 August 19, 2014




## Saint Thomas Health Nashville, TN Energy Efficiency Program



U.S. DEPARTMENT OF ENERGY | Energy Efficiency & Renewable Energy

Home Partners Allies Media About

Home » Entities » Showcase Projects » Corporate Partners » Ascension Health » Saint Thomas Hospital



Saint Thomas Hospital

### ASCENSION HEALTH Showcase Project: Saint Thomas Hospital

LOCATION	PROJECT SIZE	FINANCIAL OVERVIEW
Nashville, TN	1.1 Million Square Feet	Project Cost \$167,400

Annual Energy Use (Source EUI)		Annual Energy Cost	
Baseline (kWh)	658 kWh/yr. ft.	Baseline (Cost)	\$4,390,000
Actual (kWh)	547 kWh/yr. ft.	Actual (Cost)	\$4,228,000
Energy Savings: <b>17%</b>		Cost Savings: <b>\$162,000</b>	

16 August 19, 2014





## Sustainable Site and Transportation Design, Construction and Engineering Standards



Sacred Heart Hospital on the Gulf  
Retro commissioning success


17 August 19, 2014




## Energy Efficiency Program – Cost Avoidance and Environmental Performance Metrics

1. Set baseline for energy use and cost
  - Energy Star Portfolio Manager
2. Track performance over time
  - Monthly/ Quarterly/ Yearly
3. Use consistent metrics year over year
  - Weather Normalized Site Energy Use Intensity (EUI) per square foot
  - Blended average energy cost per k/Btu
4. Track environmental performance
  - Healthcare Energy Impact Calculator
  - <http://www.eichealth.org/>
5. Share reporting widely
  - Set up a web page, wiki or dashboard


18 August 19, 2014



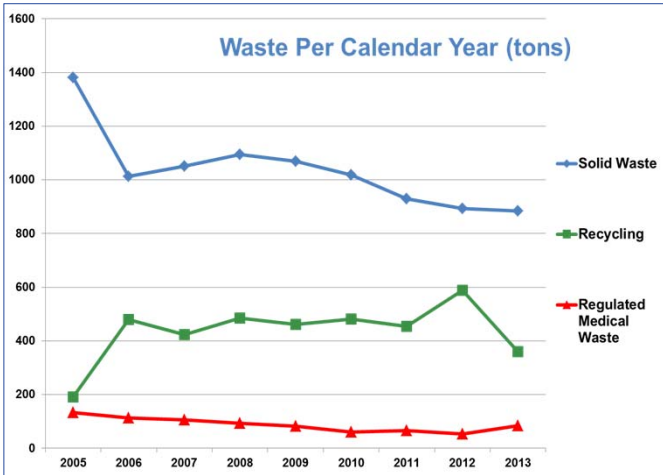
## Borgess Medical Center Kalamazoo, MI Laundry Facility



19 August 19, 2014

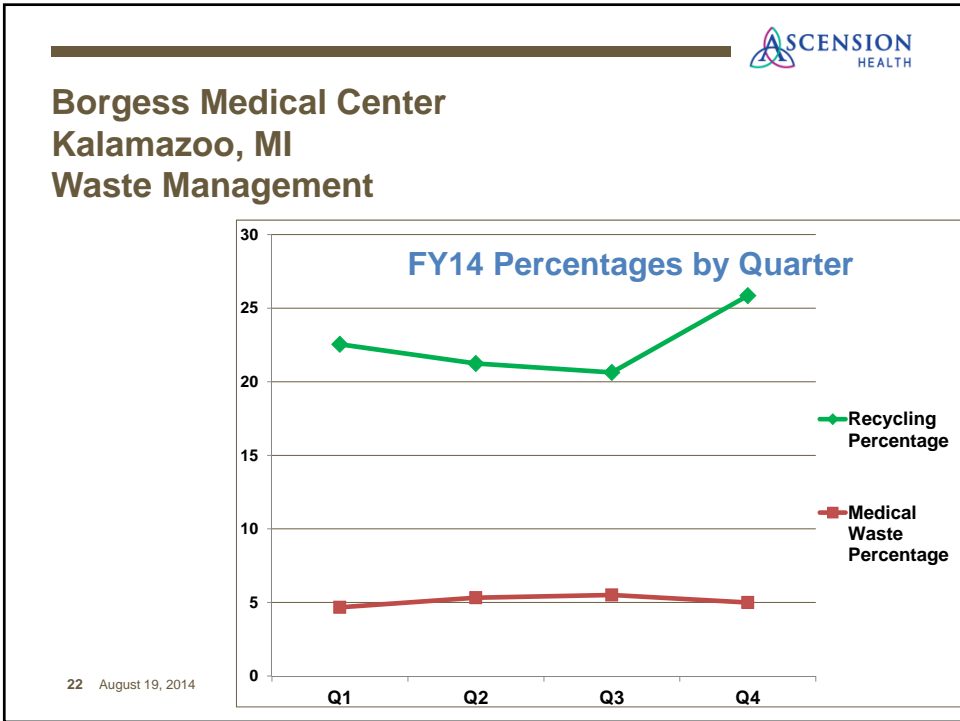
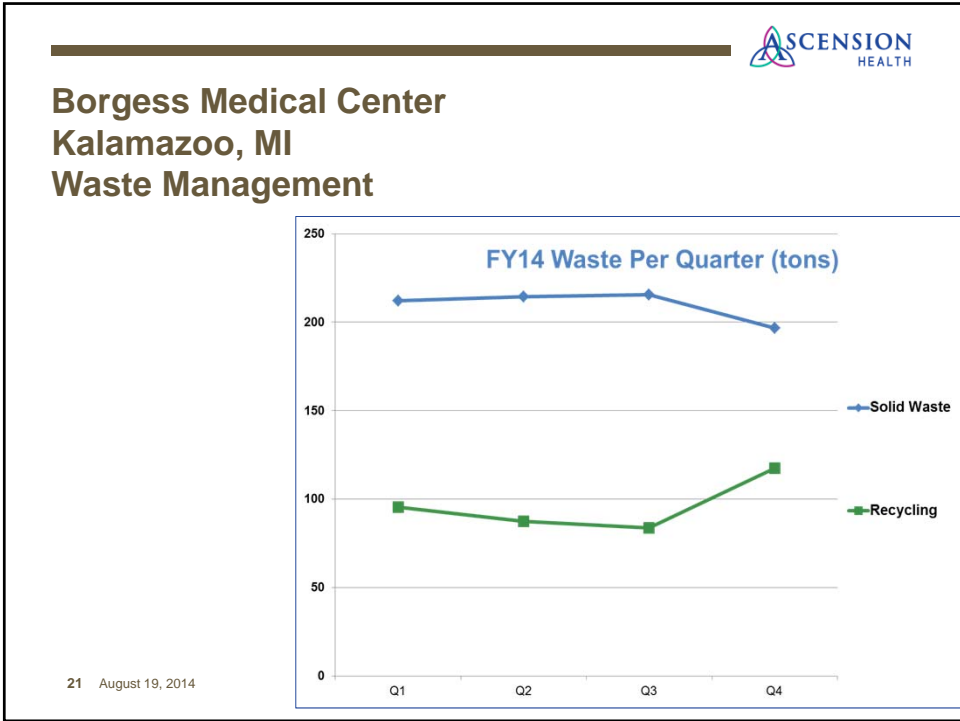


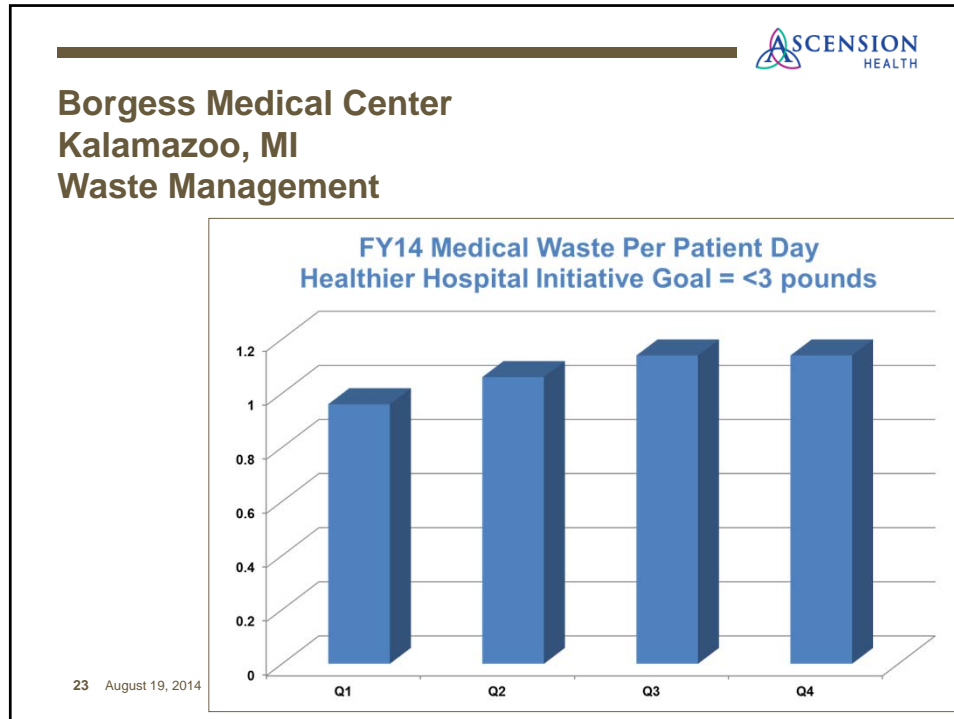
## Borgess Medical Center Kalamazoo, MI Waste Management




Year	Solid Waste	Recycling	Regulated Medical Waste
2005	1380	200	130
2006	1000	480	110
2007	1050	420	100
2008	1100	480	90
2009	1050	450	80
2010	1000	480	70
2011	920	450	60
2012	880	580	50
2013	880	350	80

20 August 19, 2014





-  ASCENSION  
HEALTH
- ### Medical Waste Management – Cost Avoidance and Environmental Performance Metrics
1. Set baseline for waste volume and cost
    - Five categories of waste; additional sub-categories in Recycling as appropriate
  2. Track performance over time
    - Monthly/ Quarterly/ Yearly
  3. Use consistent metrics year over year
    - Waste cost per ton for each category of waste
  4. Track environmental performance
    - Landfill diversion in tons
    - CO2 avoidance
    - Gallons of oil/ water saved, trees saved, etc.
  5. Share reporting widely
    - Set up a web page, wiki or dashboard
- 24 August 19, 2014



**Leadership in Energy and Environmental Design  
(LEED) Certifications**

- Dell Children’s Medical Center of Central Texas – Austin, TX
- St.Vincent Fisher’s Hospital – Fishers, IN
- Main Street Neenah Clinic – Ministry Health Care, Neenah WI



25 August 19, 2014



**Borgess Health Park  
Battle Creek, MI**



26 August 19, 2014



**Borgess Medical Center  
Kalamazoo, MI  
Sister Anastasia Healing Garden**



27 August 19, 2014



**Borgess Medical Center  
Kalamazoo, MI  
Sister Anastasia Healing Garden**



28 August 19, 2014



**Our Lady of Lourdes Memorial Hospital  
Binghamton, NY  
Composting (Waste Management and Reduction)**



29 August 19, 2014



**Environmental Stewardship Program**


**Eric Buzzell**

Vice President, General Services &  
Property Management  
Borgess Medical Center  
Kalamazoo, MI  
269.226.7320  
EricBuzzell@borgess.com

**Lois Sechrist, LEED AP ID+C**

Senior Analyst  
Facilities Resource Group  
Ascension Health  
St. Louis, MO  
314.733.8071  
Lois.Sechrist@ascensionhealth.org

30 August 19, 2014



# Q&A

© 2014 by the Catholic Health Association of the United States

31