

A Roadmap for Responsible Medical Donations

Global Health & Solidarity

- + Emphasizing the interconnectedness of global health with local health is crucial.
- + Actively promoting solidarity and deep listening can enhance global health efforts.
- + The Church demonstrates its commitment to global health and well-being through various initiatives.

 **READ**

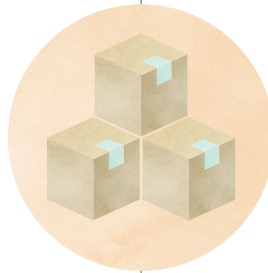
[GUIDING PRINCIPLES](#)

Environmental & Financial Challenges

- + Technician training contributes significantly to maximizing the impact of donations.
- + Being prepared to troubleshoot problems remotely is crucial.
- + Disposal of unwanted or unusable equipment should be factored into donation plans.
- + Understanding the potential environmental and financial implications of donations is important.


 **WATCH**

[UNDERSTAND THE IMPACT OF YOUR DONATION](#)



Responsible Medical Donations


- + Everyone in health care, from Sponsor to support staff, has a role in responsible donations.
- + A commitment to continuous learning and a shared appreciation for best practices is crucial for all staff involved in the decision-making process.
- + Advocating for respect in global partnerships is vital for effective collaboration.

 **WATCH**

[HSHS PRESIDENT AND CEO SPEAKS TO OUR SHARED RESPONSIBILITY AS CATHOLIC HEALTH CARE](#)

Evolution of Donation Practices

- + Organizational shift towards consultative donation practices to improve outcomes.
- + Partnerships and responsible disposal are crucial aspects of donation practices.
- + Monitoring, evaluation, and accountability are key to improving future collaborations.

 **WATCH**

[COMMITMENT TO LISTENING](#)

A Shift In Motivation

- ✦ Awareness of environmental sustainability in donation practices is important.
- ✦ It is not about getting rid of items; rather, it is about ensuring that the items will positively impact health and well-being if transferred.
- ✦ Encouraging leaders to assess the practicality and usefulness of donations can lead to more effective giving.

▶ WATCH

[WHAT IS THE BEST WAY TO SHARE MEDICAL SURPLUS?](#)

Ethical Standards

- ✦ Commitment to the common good informs the understanding that good intentions alone are not sufficient in donation practices.
- ✦ Demonstrate a commitment to respectful partnership by donating only what is useful and refraining from donating expired or broken goods.
- ✦ Promoting the highest ethical standards in donations requires considering their full impact, including both positive and negative implications. It's not always true that 'something's better than nothing.'

☰ READ

[OUR SHARED IDENTITY AS CATHOLIC HEALTH CARE](#)

Finding the Right MSRO

- ✦ The engagement of the Medical Surplus Recovery Organization (MSRO) with end users is important.
- ✦ Measures should be taken to ensure that end users have the capacity to utilize donated supplies effectively.
- ✦ Understand the MSRO's relationships with recipients in low and middle income countries before entering a partnership.
- ✦ Choosing the right MSRO partner requires appropriate vetting.

▶ WATCH

[KEY QUESTIONS TO ASK AN MSRO](#)

Outcome Measurement

- ✦ Measuring health outcomes is essential to understanding the impact of donation practices.
- ✦ Ensuring that measurements are meaningful and aligned with core commitments is important.