



The
John A. Hartford
Foundation



Deans of Catholic Colleges of Nursing Networking Call: Teaching Nursing Home Collaborative



October 8, 2024

Terry Fulmer, PhD, RN, FAAN

President

The John A. Hartford Foundation



The
John A. Hartford
Foundation

A private philanthropy
based in New York
City, established by
family owners of the
A&P grocery chain in
1929



DEDICATED TO IMPROVING THE CARE OF OLDER ADULTS

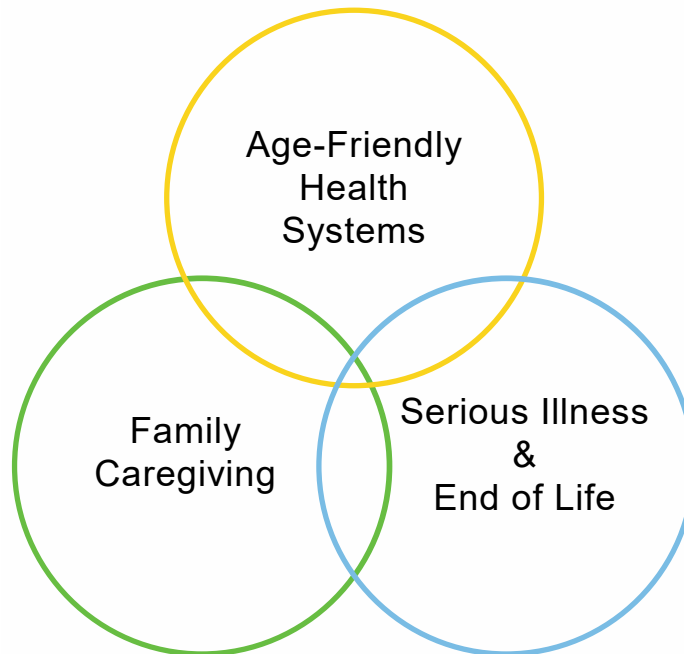


The
John A. Hartford
Foundation

Mission & Priorities

DEDICATED TO IMPROVING THE CARE OF OLDER ADULTS

PRIORITY AREAS



DEDICATED TO IMPROVING THE CARE OF OLDER ADULTS

Teaching Nursing Homes Collaborative – 2021 to present



The
John A. Hartford
Foundation

- Implementing a contemporary version of the Teaching Nursing Home model in three regions of Pennsylvania
- Demonstrating how enhanced partnerships between nursing schools and nursing homes can improve quality and cost outcomes
- Building on a prior grant that established partnerships between four nursing homes and three schools of nursing
- **Next phase:** Spreading to 400 nursing homes and 30 schools of nursing in Pennsylvania





The
John A. Hartford
Foundation

Thank You!

Terry.Fulmer@johnahartford.org

WWW.JOHNHARTFORD.ORG

DEDICATED TO IMPROVING THE CARE OF OLDER ADULTS

Pennsylvania Teaching Nursing Home Collaborative

Deans of Catholic Colleges of Nursing
Networking Call

October 8, 2024



The
John A. Hartford
Foundation



Phase II: Opportunity for Impact

The Pennsylvania Teaching Nursing Home Collaborative

A cooperative framework that forges partnerships between nursing homes, and schools of nursing, focusing on the principles of Age-Friendly Health Systems (AFHS).



PA Teaching Nursing Home Collaborative

Nursing Homes & Schools of Nursing Liaisons



**Anneliese
Perry, MS, NHA**

Program Manager,
Aging Initiatives
Perry@JHF.org



**Maureen
Saxon-Gioia, MS, HSA, RN**

Nurse Project Manager
Gioia@JHF.org



**Jacqueline
Dunbar-Jacob, PhD, RN, FAAN**

Medical Advisor for Schools of Nursing
Dunbar@pitt.edu



Why Schools of Nursing Should Partner with Nursing Homes

Elevating the Role of Nursing Homes

- Addressing Aging Population Needs

Combatting Negative Stereotypes

- Challenging Perceptions in Geriatric Nursing

Transforming Perceptions through Collaboration

- The Power of Partnership

Building the Future

- Increasing Geriatric Faculty
- Enriching Student Experience
- Equipping Nursing Students for Excellence in Geriatric Care

Clinical Instruction + Essentials Spheres of Care

1. Disease prevention and promotion
2. Chronic disease care
3. Regenerative & restorative care (acute care)
4. *Hospice, palliative, supportive care, complex chronic disease, or rehabilitative care*

The nursing home provides opportunity particularly in sphere 4, including post-acute complex chronic disease and rehabilitative care

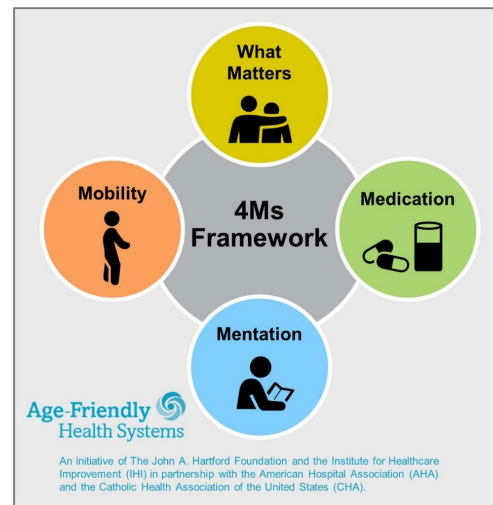
“Entry-level professional nursing education ensures that graduates demonstrate competencies through practice experiences...with each of these four spheres of care”

Age-Friendly Health Systems in Practice

New CMS Rule (2025): Hospitals must report on age-friendly protocols, including patient goals, medication management, frailty screening, social vulnerability, and leadership, or face reduced Medicare payments

Implications for Nursing Education:

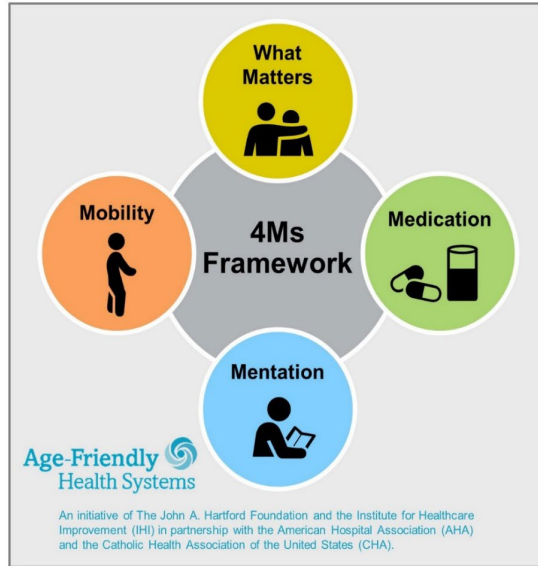
- Incorporate AFHS principles into nursing curricula
- Train students on the importance of delivering age-friendly care in diverse healthcare settings
- Prepare future nurses to meet CMS expectations for AFHS compliance



The FY2025 Inpatient Prospective Payment Systems final rule has a detailed explanation of the measure starting on p. 1424 (and includes a table, The Age Friendly Hospital Measure's Five Domain Attestations, on p. 1428).

<https://www.johnahartford.org/dissemination-center/view/cms-passes-new-2025-age-friendly-hospital-measurehttps://public-inspection.federalregister.gov/2024-17021.pdf>

AGE-FRIENDLY HEALTH SYSTEMS



What Matters

Know and align care with each older adult's specific health outcome goals and care preferences including, but not limited to, end-of-life care, and across settings of care.

Medication

If medication is necessary, use Age-Friendly medication that does not interfere with What Matters to the older adult, Mobility, or Mentation across settings of care.

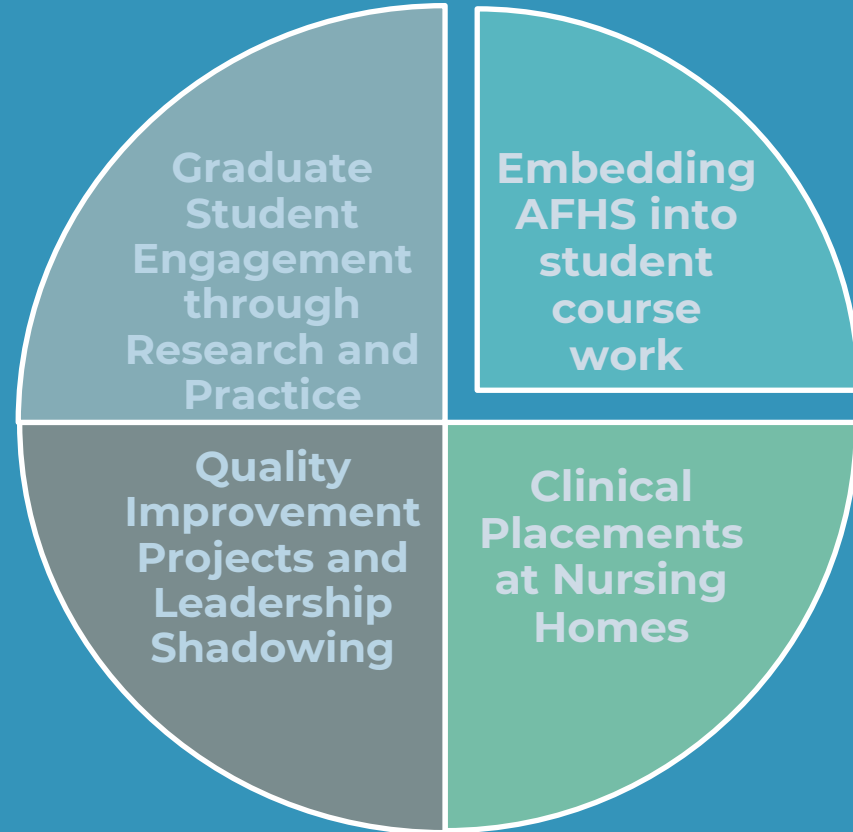
Mentation

Prevent, identify, treat, and manage dementia, depression, and delirium across settings of care.

Mobility

Ensure that older adults move safely every day in order to maintain function and do What Matters.

ACADEMIC-PRACTICE PARTNERSHIP



Age-Friendly Health Systems aim to:

- Follow an essential set of evidence-based practices;
- Cause no harm; and
- Align with What Matters to the older adult and their family caregivers

Geriatric Care as a Core Component

Importance: As the population ages, geriatric care must become a standard component of all healthcare environments, not just specialized units

Role of Nursing Schools

- Education at the Undergraduate and Graduate Levels: Embed geriatric care principles into foundational nursing education without placing excess demand on nurses as they enter the workforce
- Equip students with the skills to address the unique needs of older adults across all healthcare settings



Embedding Quality of Care

Goal: Equip nursing students with the ability to assess and improve quality of care in any healthcare setting

Key Strategies:

- Incorporate real-world case studies and simulations that focus on quality assessment
- Teach students how to use quality metrics and tools that are applicable across different healthcare environments
- Encourage reflective practice and continuous improvement in care delivery

Outcome: Graduates who can generalize quality assessment skills to improve care in diverse settings



Call to Action: Schools of Nursing

- Prepare students for geriatric care
- Adopt the nursing home as a placement site for undergraduate and advanced practice students
- Adapt an Age-Friendly framework in care delivery

**Join the Pennsylvania Teaching Nursing
Home Collaborative &
Check Out Our Resources!**

Join Us for an October Lunch & Learn Webinars

Introduction to Nursing Home Specialty Care

Enhancing Geriatric Academic and Clinical Experiences

Presenter: Sophie Campbell, MSN, RN, CRRN, RAC-CT, CNDLTC
Executive Director, PADONA

- **October 11, 2024**
- **October 18, 2024**

Accreditation: 1 Contact Nursing Hours per session

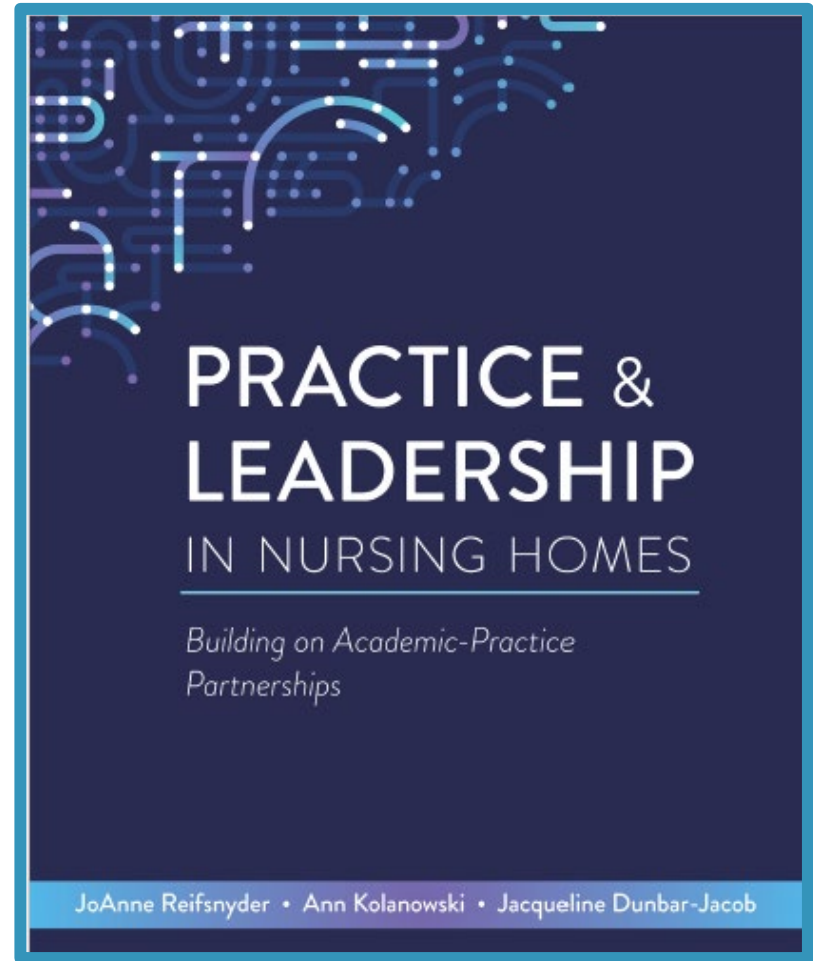
Target Audience: Nursing Faculty & Educators

Join us for an engaging session designed to equip you with the tools and insights to elevate geriatric education in your curriculum



Blueprints of Care for Nursing Education

IN COLLABORATION WITH THE
JOHN A. HARTFORD
FOUNDATION



Sample Lesson Plans:

Medication Reconciliation template

TNHC NURSING HOME CLINICAL ASSIGNMENT

MEDICATION RECONCILIATION

COURSE:	0001
LEVEL OF STUDENT:	SOPHOMORE/JUNIOR
SPHERE OF CARE:	SPHERE 4 – COMPLEX CHRONIC CARE/SUPPORTIVE CARE
ESSENTIAL DOMAIN(S):	KNOWLEDGE FOR PRACTICE QUALITY AND SAFETY
ESSENTIAL CONCEPTS:	CLINICAL JUDGMENT
ESSENTIAL COMPETENCY(S):	1.3 DEMONSTRATE CLINICAL KNOWLEDGE BASE 5.1 APPLY QUALITY IMPROVEMENT
ESSENTIAL SUB-COMPETENCY(S):	1.3c INCORPORATE KNOWLEDGE FROM OTHER DISCIPLINES TO SUPPORT 5.1a RECOGNIZE NURSING HEALTHCARE QUALITY AND SAFETY 5.2d ASSUME ACCOUNTABILITY FOR CONDITIONS, NEAR MISSES AND ERRORS
LEARNING OUTCOMES:	1. At the end of the clinical assignment, the student will be able to conduct a thorough medication reconciliation, identify patient factors and knowledge of medication actions and interactions and 2. At the end of the clinical assignment, the student will be able to identify the nurses' role and responsibilities and behaviors that contribute to medication errors 3. At the end of the clinical assignment, the student will be able to report the outcomes of a thorough medication reconciliation to appropriate staff, including a pharmacist

PRE-CLINICAL PREPARATION ASSIGNMENT:

- Readings:
- Maanen, ACD, Wiltling, I., & Jansen, PAF. (2019). Prescribing medicines to older people – How to consider the impact of ageing on human organ and body functions. *British Journal of clinical Pharmacology*, 86(10), 1921-1930. <https://doi.org/10.1111/bcp.14094>
- 2023 American Geriatrics Society Beers Criteria Update Expert Panel (2023). American Geriatrics Society 2023 Updated Beers Criteria for Potentially Inappropriate Medication Use in Older Adults. *Journal of the American Geriatrics Society*. 71(7), 2052-2071. <https://doi.org/10.1111/jgs.18372>
- Davies, L, E, Spiers, G., Kingston, A., Todd, A., Adamson, J., & Hanratty, B. (2020). Adverse outcomes of polypharmacy in older people: Systematic review of reviews. *Journal of the American Medical Directors Association*. 21(2), 181-187. <https://doi.org/10.1016/j.jamda.2019.10.022>
- Daliri, S., Bouhrouf, M., Meerendonk, H. W.P.C., Burman, B. M., Reimer, W. J. M., Kooij, M. J., & Carkit, F. (2021). Longitudinal medication reconciliation at hospital admission, discharge and post-discharge. *Research in Social and Administrative Pharmacy*, 17(4), 677-684. <https://doi.org/10.1016/j.sapharm.2020.05.022>
- Nebeker, J. R., Barach, P., & Samore, M. H. (2004). Clarifying adverse drug events: A clinician's guide to terminology, documentation, and reporting. *Annals of Internal Medicine*. 140(10), 755-760.

CLINICAL ASSIGNMENT & COMPONENTS:

- Collect data: Collect medication information from the chart of at least two patients, one female and one male, aged 70 or older who have family
- Review chart data:
- medication name, dosage, schedule, indication, duration taking, method of administration
 - patient age, kidney status, liver status, gastrointestinal status, cognitive status, known allergies, dietary prescription
- Review medication information: usual dosage range, method of administration, mechanism of action, contraindications, drug interactions, side effects, potential adverse reactions
- Interview patient: Knowledge of medications taken, self or other administered at home, usual schedule of taking, indication of presence of potential side effects or adverse reactions, supplements taken

Access & Support



Learning Sessions



Office Hours



Member Hub

PA TEACHING NURSING HOME COLLABORATIVE

WWW.PATNHC.ORG



Join the Collaborative's network of schools of nursing & nursing homes dedicated to strengthening their academic-practice partnerships, integrating gerontological nursing into curricula, supportive complex chronic disorders & rehabilitative care.

WHAT WE OFFER:

Free, Curated Resources

Expert-Led Webinars

Peer-to-Peer Support



JOIN THE COLLABORATIVE!



www.patnhc.org/get-started/join



REGISTER NOW!

FALL 2024 LEARNING SERIES

Join the Pennsylvania Teaching Nursing Home Collaborative's Learning Series this fall! These **FREE 1-hour Zoom webinars** empower and educate nursing homes and schools of nursing by sharing promising practices for academic practice partnerships and Age-Friendly Health Systems.

OCT
9

SESSION 1:

Engaging Nursing Students in the Careforce: Key Insights and Promising Practices from the PA Teaching Nursing Home Collaborative

NOV
5

SESSION 2:

Age-Friendly Health Systems for Nursing Homes and Schools of Nursing: Collaborating for Success in Medication Reconciliation Using the 4Ms

DEC
4

SESSION 3:

Quarterly Learning Collaborative: Building Relationships & Cultivating Engagement between Nursing Homes and Schools of Nursing

Visit
www.patnhc.org/get-started/join
to join the Collaborative
& register for the Learning Series!



Members can attend
live learning sessions,
quarterly collaboratives
or access recorded Just-
in Time learnings.



www.patnhc.org



info@patnhc.org

Initiating the Academic Practice Partnership:

Misericordia University



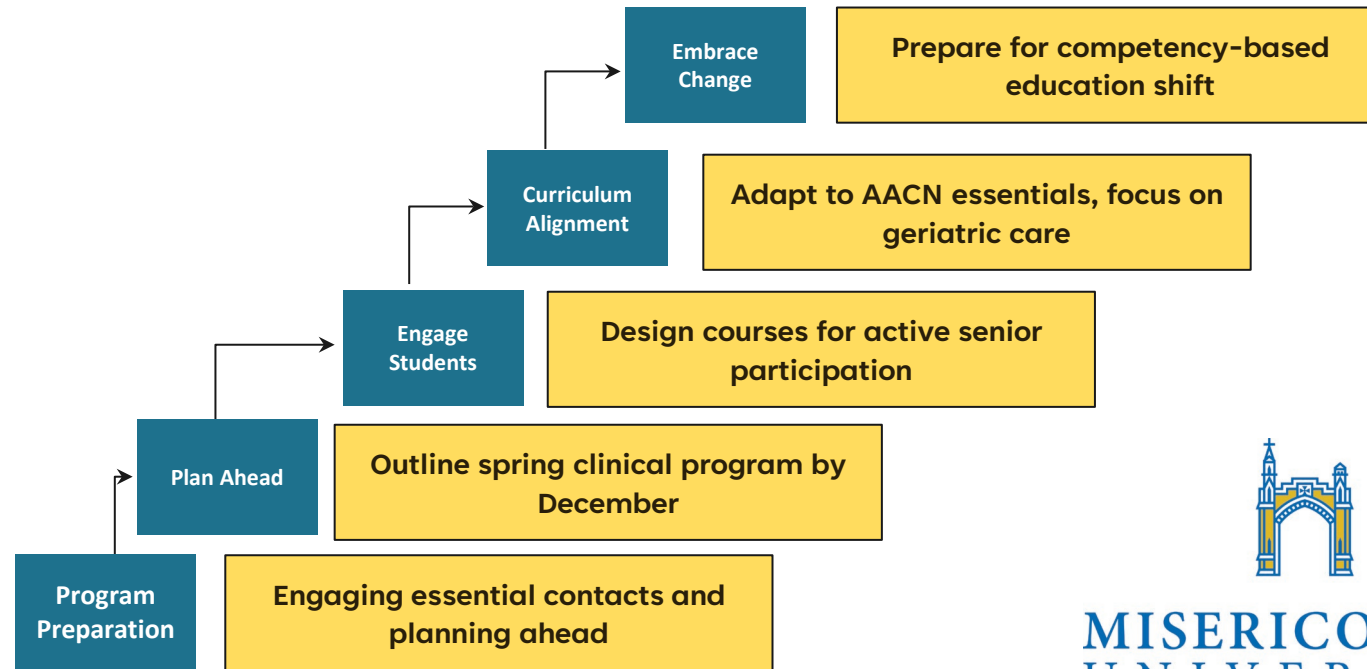
Annette Weiss, PhD, RN, CNE

Misericordia University

President-elect of the Pennsylvania Higher
Education Nursing Schools Association
(PHENSA)



Initiating the Academic Practice Partnership: School of Nursing Journey



MISERICORDIA
UNIVERSITY