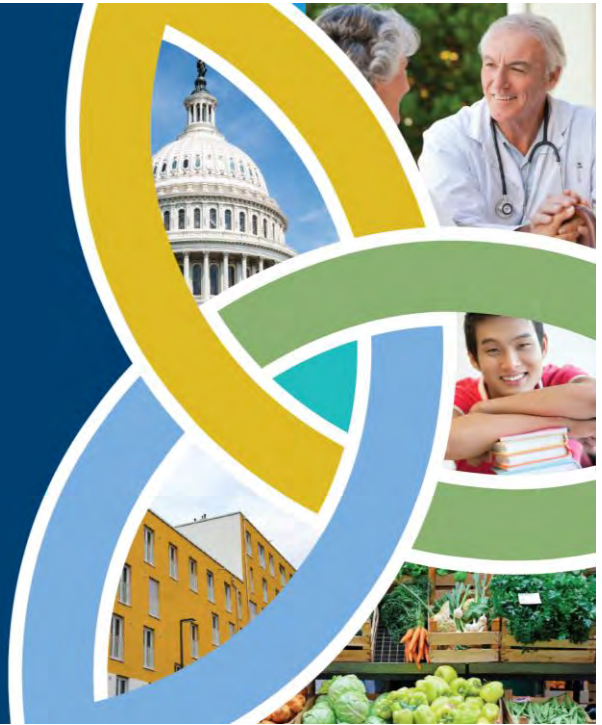


HEALING THE MULTITUDES

Catholic Health Care's Commitment to Community Health



© CATHOLIC HEALTH ASSOCIATION OF THE UNITED STATES, ALL RIGHTS RESERVED.



SSM HEALTH

Our Vision

Through our participation in the healing ministry of Jesus Christ, **communities, especially those that are economically, physically and socially marginalized, will experience improved health** in mind, body, spirit and environment within the financial limits of the system.

© CATHOLIC HEALTH ASSOCIATION OF THE UNITED STATES, ALL RIGHTS RESERVED.

THE SOCIAL DETERMINANTS OF HEALTH

The social determinants of health are those conditions in which people live, work, and play that can ultimately influence their health.

- ECONOMIC STABILITY
- HEALTH AND HEALTH CARE
- SOCIAL AND COMMUNITY CONTEXT
- EDUCATION
- NEIGHBORHOOD AND BUILT ENVIRONMENT



© CATHOLIC HEALTH ASSOCIATION OF THE UNITED STATES, ALL RIGHTS RESERVED.

CORE VIRTUES

The hard, but necessary work to shape social determinants of health requires the cultivation of core virtues in individuals and the organization.

- HUMILITY
- SOLIDARITY
- TRUST
- PATIENCE

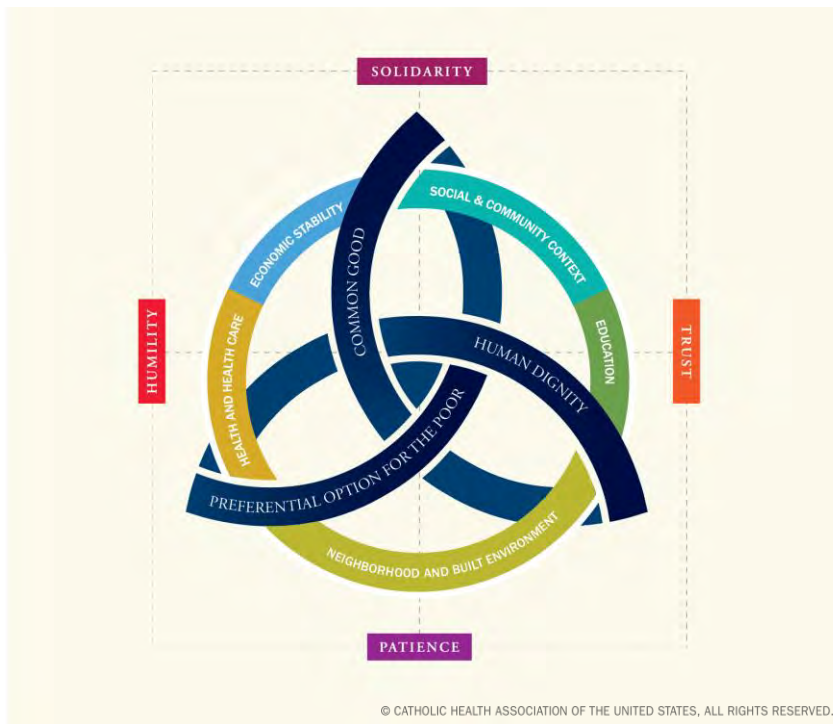


© CATHOLIC HEALTH ASSOCIATION OF THE UNITED STATES, ALL RIGHTS RESERVED.

A DISTINCTLY CATHOLIC VISION

Investment in social determinants of health is grounded in core principles of Catholic Social Teaching.

- COMMON GOOD
- PREFERENTIAL OPTION FOR THE POOR
- HUMAN DIGNITY

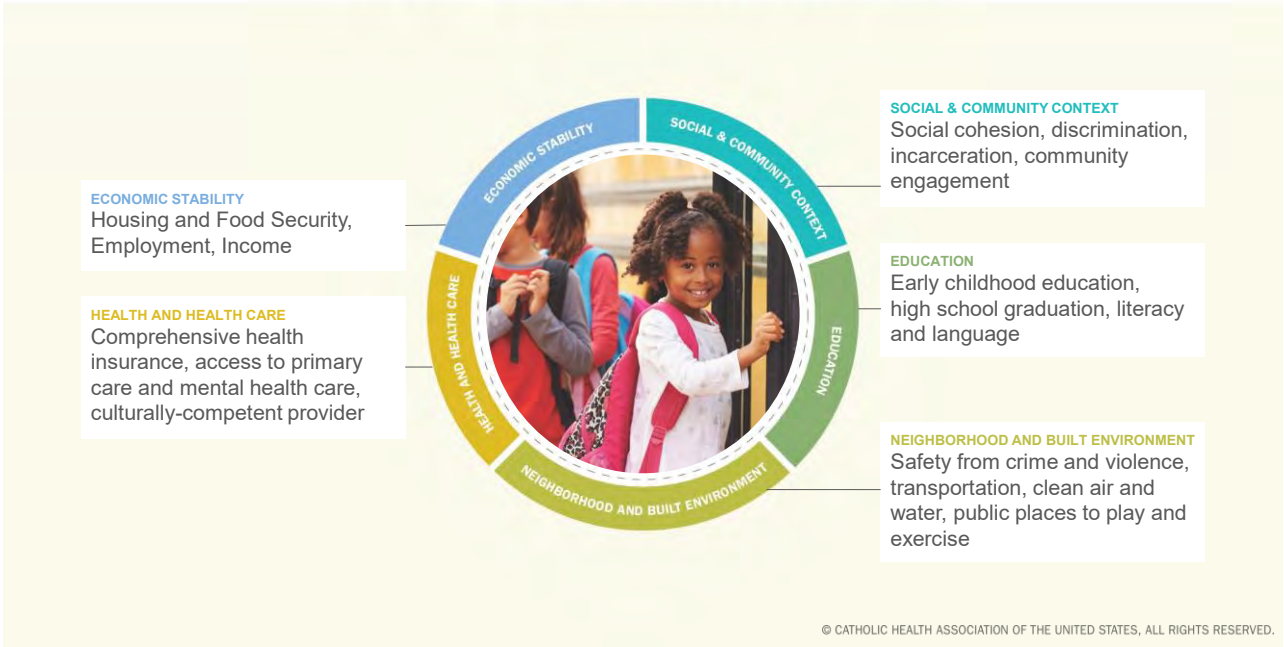


ROOTED IN OUR CATHOLIC HERITAGE



© CATHOLIC HEALTH ASSOCIATION OF THE UNITED STATES, ALL RIGHTS RESERVED.

THE SOCIAL DETERMINANTS OF HEALTH



ECONOMIC STABILITY

KEY FACTORS

Housing and Food Security, Employment, Income

EXAMPLE

Housing stability impacts one's health. On the negative side, being homeless or constantly moving leads to high levels of mental and physical stress, difficulty affording food and following up on health issues. On the positive side, having stable housing gives individuals and families a safe place to sleep, eat and maintain the well-being needed to work and learn.



HEALTH AND HEALTH CARE

KEY FACTORS

Comprehensive health insurance, access to primary care and mental health care, culturally-competent provider

EXAMPLE

The schedule of available appointments impacts one's health. On the negative side, providers can offer narrow windows of time for care, making it particularly challenging for those with inflexible work schedules to access care for themselves or their children. On the positive side, providers can use technology and off-peak appointments to ensure equality of access across populations.

© CATHOLIC HEALTH ASSOCIATION OF THE UNITED STATES, ALL RIGHTS RESERVED.



SOCIAL & COMMUNITY CONTEXT

KEY FACTORS

Social cohesion, discrimination, incarceration, community engagement

EXAMPLE

Racial injustice impacts one's health. On the negative side, someone experiencing racial discrimination is less trusting of institutions like hospitals or less likely to be hired for a good job that carries health insurance. On the positive side, a community with little racial discrimination will see health care providers better reflect the racial make-up of their communities or less difference in incarceration rates based on race.

© CATHOLIC HEALTH ASSOCIATION OF THE UNITED STATES, ALL RIGHTS RESERVED.



EDUCATION

KEY FACTORS

Early childhood education, high school graduation, literacy and language

EXAMPLE

The quality of education impacts one's health. On the negative side, those with a poor education are less likely to know how to eat healthily or be less able to adhere to instructions for taking prescribed medications. On the positive side, those with a good education are more likely to be employed or live in neighborhoods that have easy access to health care services.

© CATHOLIC HEALTH ASSOCIATION OF THE UNITED STATES, ALL RIGHTS RESERVED.



NEIGHBORHOOD AND BUILT ENVIRONMENT

KEY FACTORS

Safety from crime and violence, transportation, clean air and water, public places to play and exercise

EXAMPLE

Safe environments for recreation impact one's health. On the negative side, the opportunity to exercise can be compromised by cracked sidewalks, poor air quality and unsafe or unmaintained parks. On the positive side, a neighborhood where it is safe to jog, ride bikes and play in parks helps build healthy patterns of behavior and create a community where exercising is a shared experience.

© CATHOLIC HEALTH ASSOCIATION OF THE UNITED STATES, ALL RIGHTS RESERVED.

A comprehensive strategy requires engaging at three levels:

- The clinical encounter
- Organizational structures and processes
- Community relationships

© CATHOLIC HEALTH ASSOCIATION OF THE UNITED STATES, ALL RIGHTS RESERVED.

THE CLINICAL ENCOUNTER

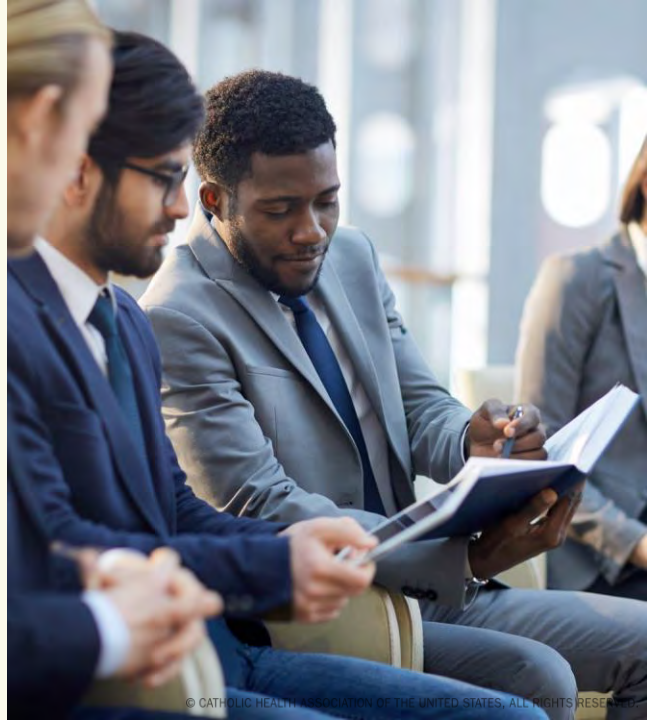
The clinical encounter offers an important moment to integrate a community health strategy and raise the profile of social determinants of health. This often occurs at intake, but it is also important to take account of these factors as part of discharge planning.



© CATHOLIC HEALTH ASSOCIATION OF THE UNITED STATES, ALL RIGHTS RESERVED.

ORGANIZATIONAL STRUCTURES AND PROCESSES

Community oriented health care organizations consider community well-being in their operations. For example, when hiring, they focus on community members, including persons who might be disadvantaged in the job market because of disability or history of incarceration. They look to local vendors and contractors, supporting the economies of their communities. They are environmentally responsible, making sure that in the process of healing, they do not harm the air, water or soil. Such organizational behavior reflects well on the reputation of the facility and promotes the vibrancy of the overall community and the facility itself.



© CATHOLIC HEALTH ASSOCIATION OF THE UNITED STATES. ALL RIGHTS RESERVED.

COMMUNITY RELATIONSHIPS

The community relationships our organizations invest in can create a larger environment in which social determinants of health are improved. Every community is a complex organism that requires great care to understand. There are challenges to these efforts, but a community health strategy depends on creating a network of like-minded organizations that have similar commitments.



© CATHOLIC HEALTH ASSOCIATION OF THE UNITED STATES. ALL RIGHTS RESERVED.

Practices For Leadership

- ❖ Design a **dashboard** for community-level work as most organizations have for clinical quality or financial performance
- ❖ Determine all divisions that are involved in community health and ensuring an effective **organizational structure**
- ❖ Consider strategic **placement of leadership** on boards of local organizations to enhance collaboration and vice versa

© CATHOLIC HEALTH ASSOCIATION OF THE UNITED STATES, ALL RIGHTS RESERVED.

Time for Reflection

1. What are my reactions, intellectual and affective, to the possibility of my organization investing more on social determinants?
2. Which social determinants do I believe are most pressing for the community we serve?
3. What steps must I take to determine my role in this aspect of our ministry?

© CATHOLIC HEALTH ASSOCIATION OF THE UNITED STATES, ALL RIGHTS RESERVED.

This is a Divider Slide
This is a Divider Slide

© CATHOLIC HEALTH ASSOCIATION OF THE UNITED STATES, ALL RIGHTS RESERVED.

CORE VIRTUES

HUMILITY

We and others have expertise essential to shaping the social determinants of health. We must lead when necessary, but also follow.

SOLIDARITY

We can only thrive when our entire community thrives. It requires a commitment to solidarity — the notion that the health of our organization is bound up with the health of our communities.



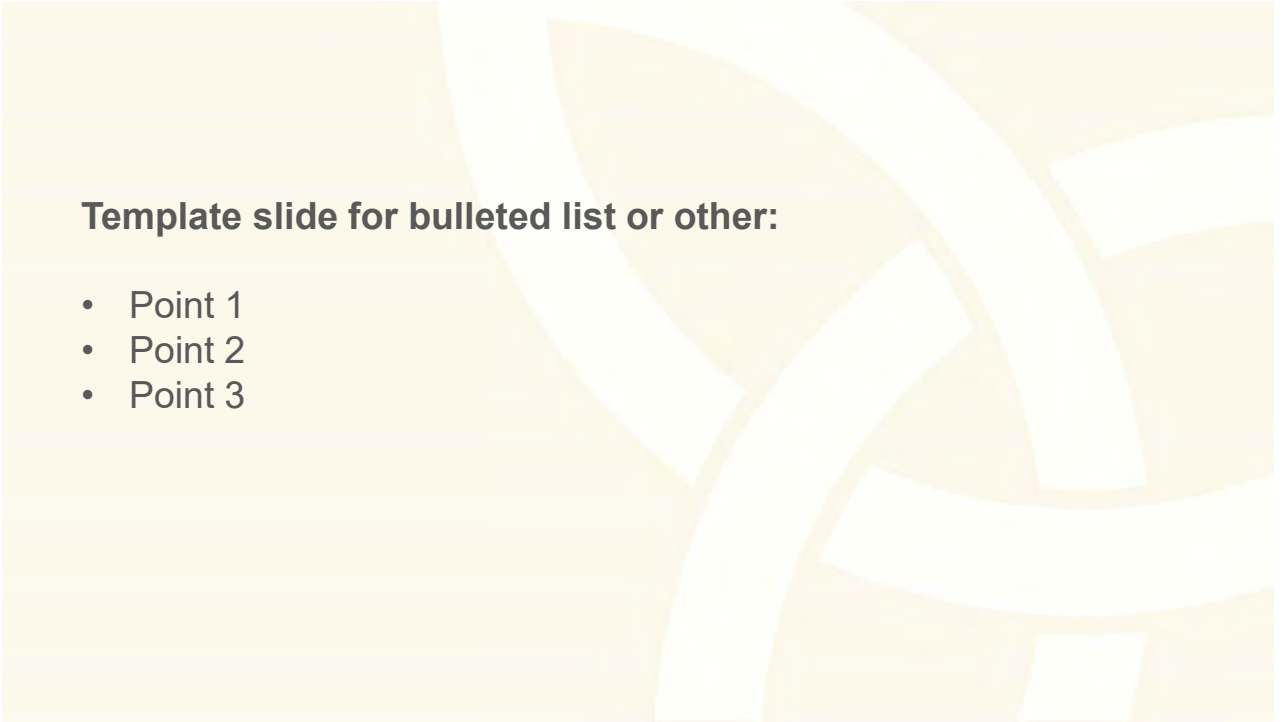
Conducting programs that shape the social determinants of health and observing their impact can take many years or longer. Long-term strategies are essential.

Shaping social determinants of health requires building and maintaining trust, especially with vulnerable communities.

PATIENCE

TRUST

© CATHOLIC HEALTH ASSOCIATION OF THE UNITED STATES, ALL RIGHTS RESERVED.



Template slide for bulleted list or other:

- Point 1
- Point 2
- Point 3



This is a Divider Slide
This is a Divider Slide



Quote slide

Person who said the quote

Title of person who said the quote