

Collaboration between Ministry and Community to Heal Fathers, Families, and Communities



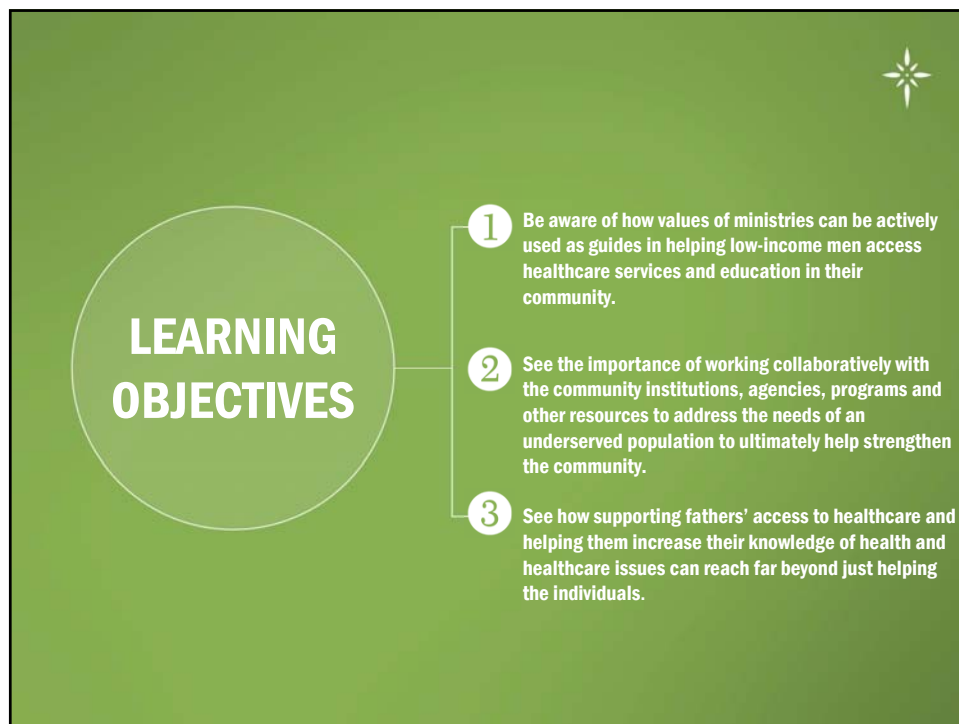
Collaboration, Compassion, Courage, Respect, & Justice

SOUTH CAROLINA CENTER
FOR FATHERS AND FAMILIES

*"Alone we can do so little; together we can do
so much." - Helen Keller*

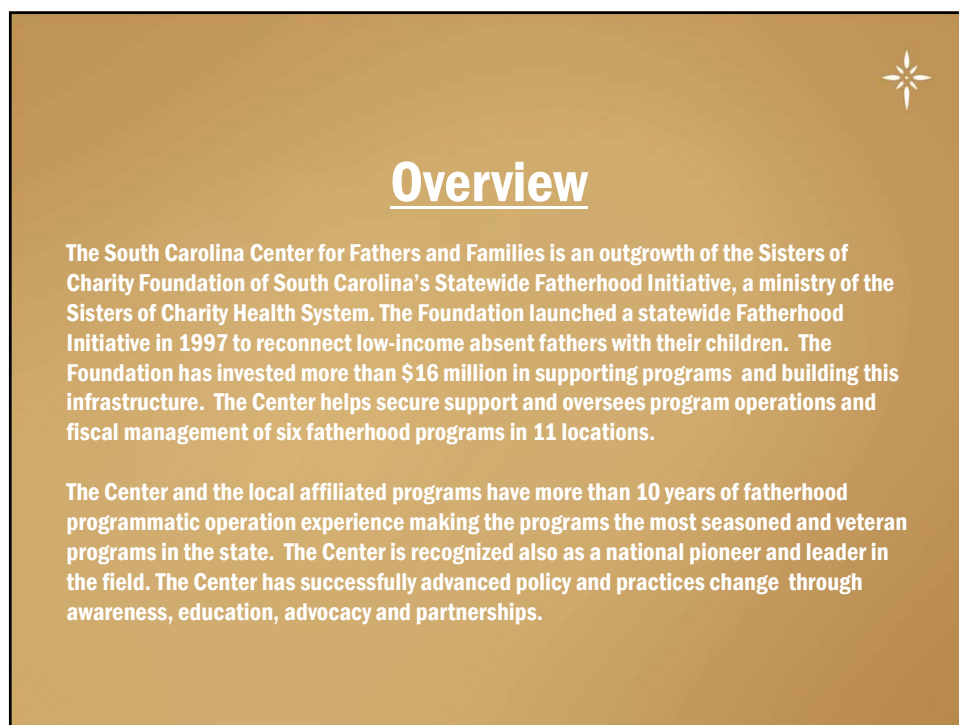
Dawn Pender, MSN, APRN-BC, CPNP
Project Director – Access to Healthcare





LEARNING OBJECTIVES

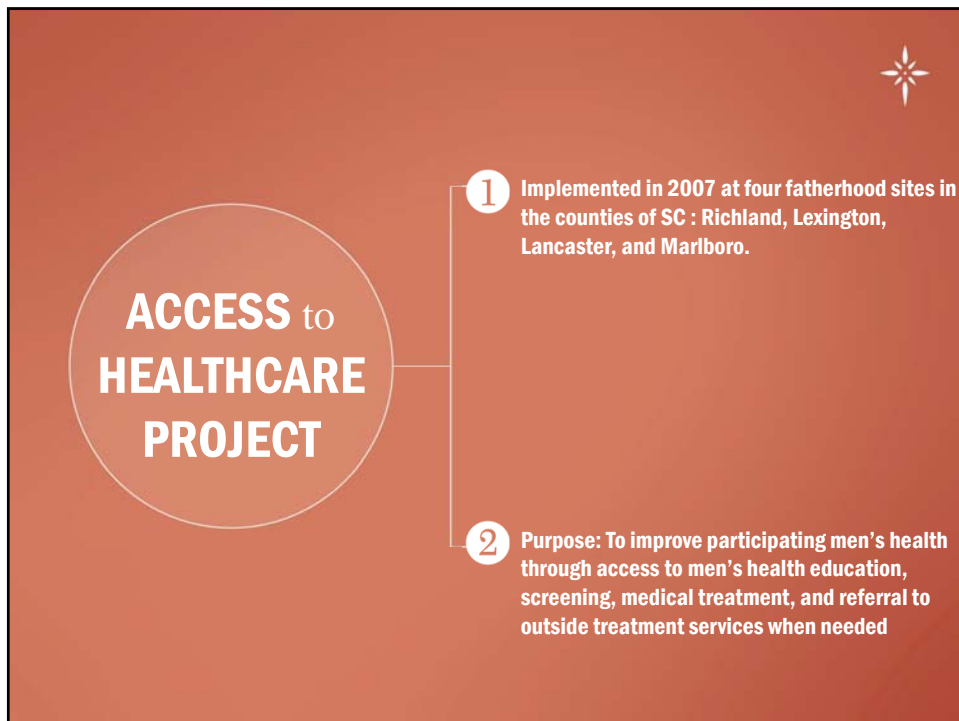
- 1 Be aware of how values of ministries can be actively used as guides in helping low-income men access healthcare services and education in their community.
- 2 See the importance of working collaboratively with the community institutions, agencies, programs and other resources to address the needs of an underserved population to ultimately help strengthen the community.
- 3 See how supporting fathers' access to healthcare and helping them increase their knowledge of health and healthcare issues can reach far beyond just helping the individuals.

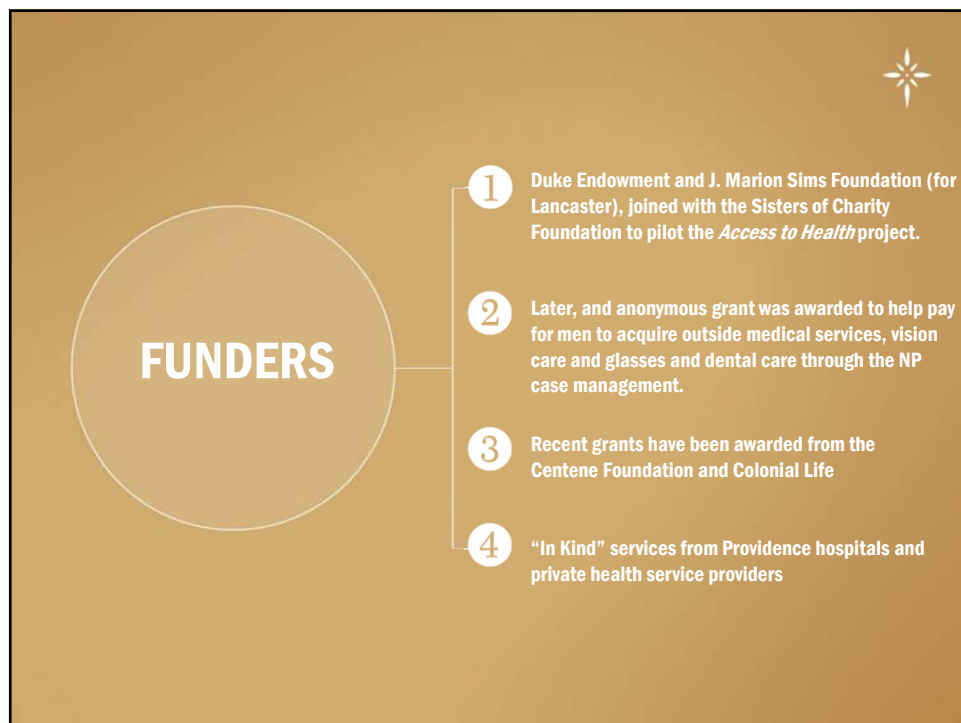
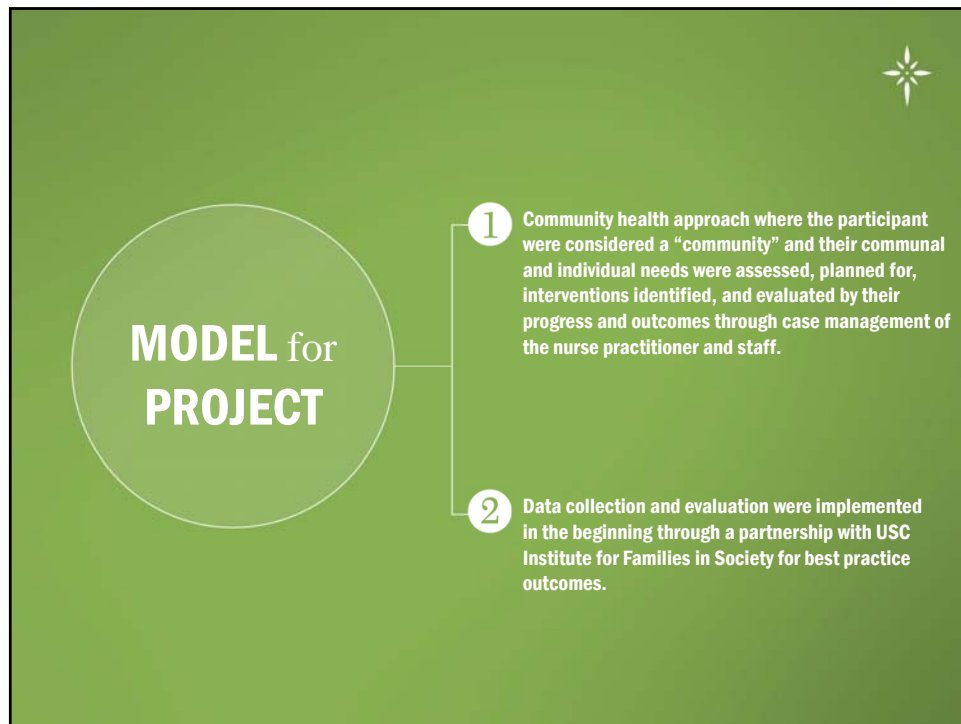


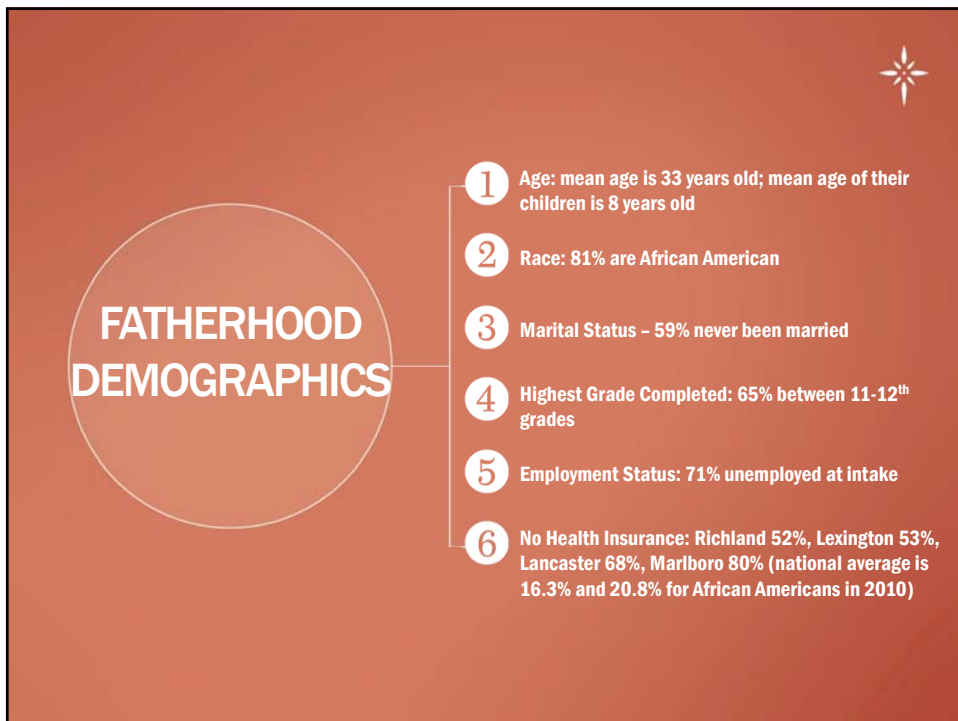
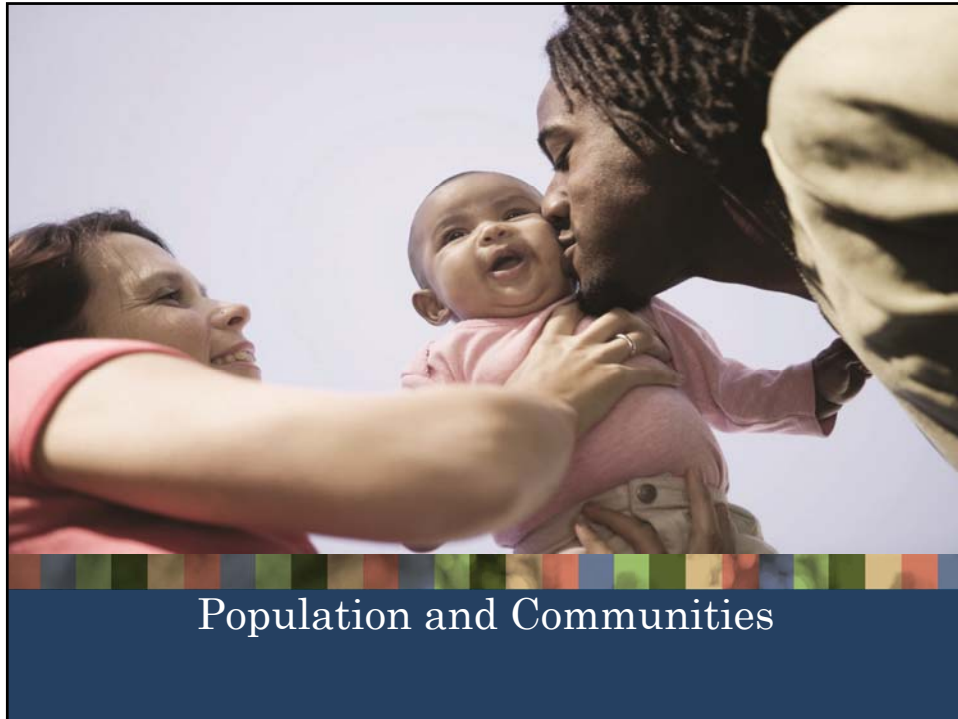
Overview

The South Carolina Center for Fathers and Families is an outgrowth of the Sisters of Charity Foundation of South Carolina's Statewide Fatherhood Initiative, a ministry of the Sisters of Charity Health System. The Foundation launched a statewide Fatherhood Initiative in 1997 to reconnect low-income absent fathers with their children. The Foundation has invested more than \$16 million in supporting programs and building this infrastructure. The Center helps secure support and oversees program operations and fiscal management of six fatherhood programs in 11 locations.

The Center and the local affiliated programs have more than 10 years of fatherhood programmatic operation experience making the programs the most seasoned and veteran programs in the state. The Center is recognized also as a national pioneer and leader in the field. The Center has successfully advanced policy and practices change through awareness, education, advocacy and partnerships.









Communities Served (as of Feb 2012)

County	Population	% African American	% below Poverty	% Unemployed
Marlboro	28,933	50.9%	31.1%	16.7%
Lancaster	76,652	23.8%	19.8%	12.2%
Lexington	262, 391	14.3%	10.6%	7.3%
Richland	384, 504	45.9%	16%	8.3%



ENGAGEMENT

- 1 Support roles of staff
- 2 Identifying and engaging community health partners
- 3 Unanticipated challenges in community
- 4 Link to services – Community partnership agreement
- 5 Bridging participants to community health programs



Case Study



Outcomes



Health Services (Jan, 2008 – Dec, 2011)

2008 - 2011	#Men Rec'd-	#Services -	Screenings by Outside Providers:	
	Services	Rendered	General Screenings	HIV Screenings
Lancaster	187	717		
Lexington	292	1667		
Marlboro	291	797		
Richland	333	1174		
Total	1103	4355	442	239



COMMUNITY PARTNERS

25 community partners in the 4 sites including:

- Providence Hospitals
- SC DHEC
- Catawba Coalition
- Care Innovations for HIV education/screening
- LRADAC and local substance abuse counseling agencies
- SC Free medical clinic and local "sliding scale" medical clinics
- private physicians, surgeons, dentists and optometrists for "in kind" or reduced cost care



Wider impact of the program to fathers,
children, families, and communities



Values of the Sisters of Charity
of St. Augustine

Collaboration, Compassion, Courage,
Respect and Justice

