



Sponsorship and Governance: Complementary Roles

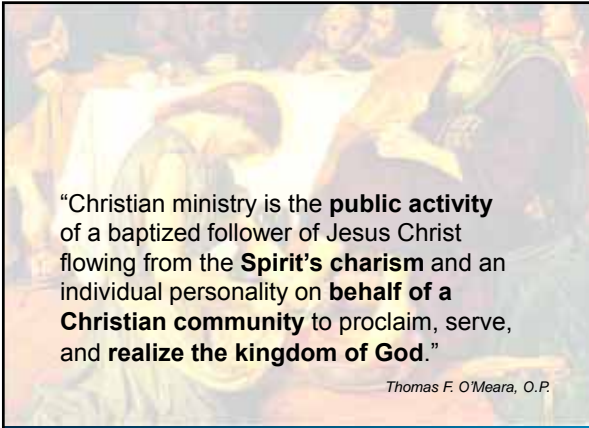
SR. MARY HADDAD, RSM, MSW, MBA
Senior Director, Sponsor Services
Catholic Health Association

© The Catholic Health Association of the United States



ministry

© The Catholic Health Association of the United States 2



“Christian ministry is the **public activity** of a baptized follower of Jesus Christ flowing from the **Spirit's charism** and an individual personality on **behalf of a Christian community** to proclaim, serve, and **realize the kingdom of God.**”

Thomas F. O'Meara, O.P.

© The Catholic Health Association of the United States 3

Sponsorship of a health care ministry is a formal relationship between an authorized Catholic organization and a legally formed hospital, clinic, nursing home (or other institution) ...

© The Catholic Health Association of the United States

4

... entered into for the sake of **sustaining and promoting Christ's healing ministry to people in need.**"

*Toward a Theology of Catholic Health Care
Sponsorship – A Work in Progress
Catholic Health Association of the United States*

© The Catholic Health Association of the United States

5

sponsor



© The Catholic Health Association of the United States

6

sponsor



© The Catholic Health Association of the United States

7

sponsor



© The Catholic Health Association of the United States

8

sponsorship

Formal relationship

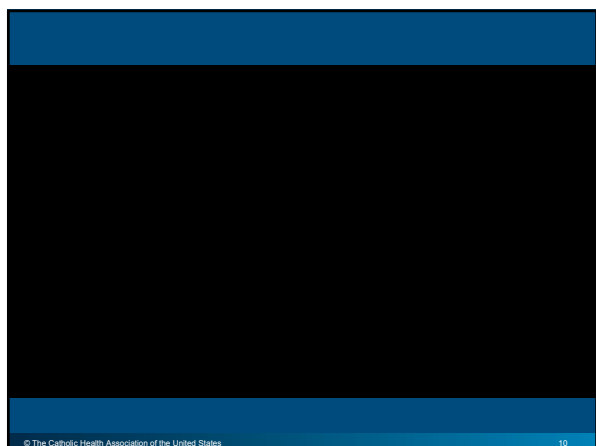
Public dimension

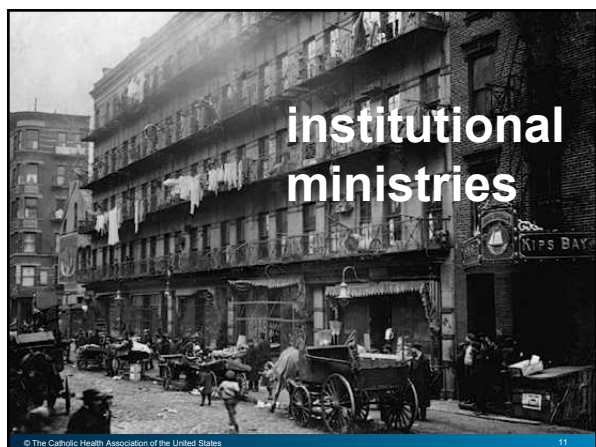
Involves responsibility

Requires accountability

© The Catholic Health Association of the United States

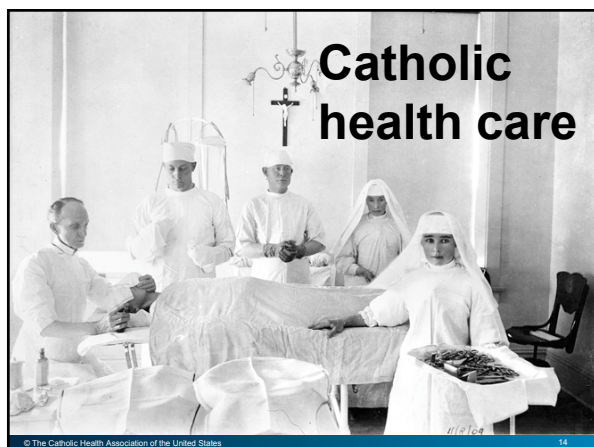
9













statistics 1968-2016

	1968	1978	1988	1996	2008	2015	2016
Catholic hospitals	796	641	616	625	621	645	639
Catholic hospitals in systems	*	*	444	424	537	603	593
Catholic health systems	*	29	60	62	63	49	46
Single-sponsor hospitals (System and free-standing)	796	641	603	375	447	560	563
Multi-sponsor system hospitals	*	*	7	250	174	85	76
Lay CEOs (Hospital)	26	295	420	525	605	643	637
Religious CEOs (Hospital)	770	346	196	45	13	2	2
Sponsor (Congregations of women)	221	229	226	232	154	91	85
Sponsor (Congregations of men)	4	10	9	10	5	5	5
Dioceses serving as sponsors	*	*	30	42	36	32	31
Other sponsor models	0	0	6	11	11	21	24

© The Catholic Health Association of the United States

16

transitions

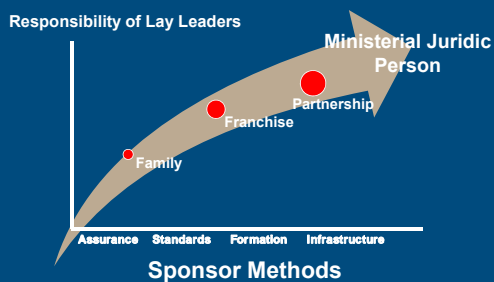


© The Catholic Health Association of the United States

17

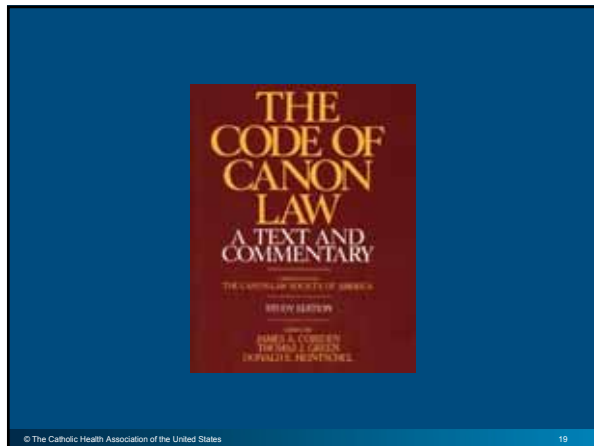
Evolution of Sponsorship

After We're Gone: Creating Sustainable Sponsorship



© The Catholic Health Association of the United States

18



Juridic Person

A group of persons (aggregate of persons) or things (property) dedicated to the purpose of helping the church achieve its mission

(Canon 114.1)

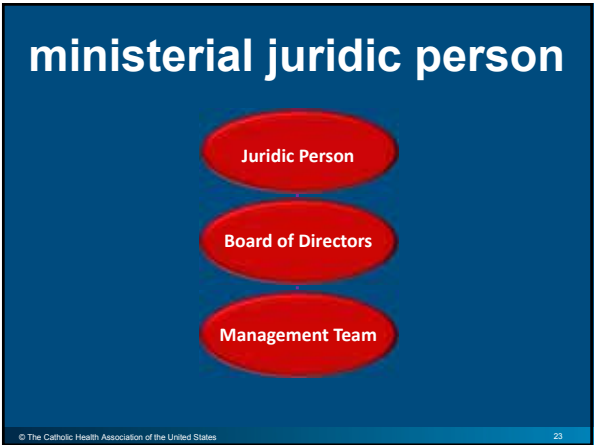
traditional model

Religious Institute
Public Juridic Person

Board of Directors

Management Team





Health Systems Sponsored by a Ministerial Juridic Person			
SYSTEM	TITLE/DATE ESTABLISHED	SYSTEM	TITLE/DATE ESTABLISHED
Catholic Health Initiatives	Catholic Health Care Federation, 1991	SCL Health	Leaven Ministries, 2008
Covenant Health Systems, Inc.	Covenant Health Systems, 1995	Providence Health and Services	Providence Ministries, 2009
Peace Health	Peace Health, 1997	Ascension	Ascension Sponsor, 2011
Trinity Health	Catholic Health Ministries, 2000	Mercy Health	Partners in Catholic Health Ministries, 2013
Bon Secours Health System	Bon Secours Ministries, 2006	SSM Health Care	SSM Health Ministries, 2013
St. Joseph Health	St. Joseph Health Ministry, 2006	SMP Health System	SMP Health Ministry, 2015
Sisters of Charity Health System	CSA Health System Ministries, 2007	Hospital Sisters Health System	Hospital Sisters Ministries, 2015
Mercy	Mercy Health Ministry, 2008	Presence Health	Presence Health Ministries, 2015

© The Catholic Health Association of the United States 24

reserved powers



© The Catholic Health Association of the United States

25

traditional role

**Ensure fidelity
to the ministry
of Jesus**

© The Catholic Health Association of the United States

26

traditional role

**Ensure spirit or
charism is
preserved, promoted**

© The Catholic Health Association of the United States

27

traditional role

**Cultivate strong
relationship with
Church leadership
and founding
congregations**

© The Catholic Health Association of the United States

28

traditional role

**Ensure decisions
reflect Catholic
social teaching, and
are in keeping with
ethical tradition**

© The Catholic Health Association of the United States

29

traditional role

**Ensure future
vitality and viability
of the ministry**

© The Catholic Health Association of the United States

30



Sponsorship	Governance	Management
Juridic Person	Corporation	Organization
Canon Law	Civil Law	Civil Law
Members	Directors	Executives
Establishment of Mission & Philosophy	Policy development relative to Mission & Philosophy	Implementation of strategy relative to Mission & Philosophy
Communion with the Church	Fiduciary	Administrator





Sponsorship and Governance: Complementary Roles

SR. MARY HADDAD, RSM, MSW, MBA
Senior Director, Sponsor Services
Catholic Health Association

© The Catholic Health Association of the United States
