



Number.Revision: ECP005.004	Effective Date: 12/11/08
Replaces Number.Revision: ECP005.003	Replaces Date: 10/3/06
Page 1 of 4	

# ENVIRONMENTAL MANAGEMENT SYSTEM MANUAL

## POLICY

St. Elizabeth Medical Center shall have a formal Environmental Management System to assist in complying with environmental laws, regulations, and other requirements and to improve environmental performance. The Environmental Management System shall apply to all Medical Center facilities and activities.

### 1) PURPOSE

The purpose of this policy is to outline St. Elizabeth Medical Center's Environmental Management System, including the identification of Medical Center documents in place to satisfy the required elements established in ISO 14001.

### 2) ABBREVIATIONS

EHSO: Environmental, Health & Safety Officer  
ISO: International Organization for Standardization

### 3) DEFINITIONS

*Environment* – Surroundings in which the Medical Center operates including air, water, land, natural resources, flora, fauna, humans, and their interrelation

*Environmental Aspect* – Element of the Medical Center's activities or products or services that can interact with the environment.

*Environmental Management System* – Part of the Medical Center's management system used to develop and implement its environmental policy and manage its environmental aspects.

*Environmental Performance* – Measurable results of the Medical Center's environmental aspects

*Environmental Policy* – Overall intentions of the Medical Center related to its environmental performance

### 4) PROCEDURE ELEMENTS

St. Elizabeth Medical Center shall have an established Environmental Policy to govern its Environmental Management System. The Environmental Management System shall operate under a process that involves planning, implementation & operation, checking, and management review to ensure proper operation and continual improvement of the system. Table 1 on the following page summarizes the elements of the St. Elizabeth Medical Center Environmental Management System as they correlate to the ISO 14000 required elements. The flow chart on the following page displays the process that the Environmental Management System follows.



Number.Revision: ECP005.004	Effective Date: 12/11/08
Replaces Number.Revision: ECP005.003	Replaces Date: 10/3/06
Page 2 of 4	

## ENVIRONMENTAL MANAGEMENT SYSTEM MANUAL

**TABLE 1  
ENVIRONMENTAL MANAGEMENT SYSTEM ELEMENTS  
ST. ELIZABETH MEDICAL CENTER**

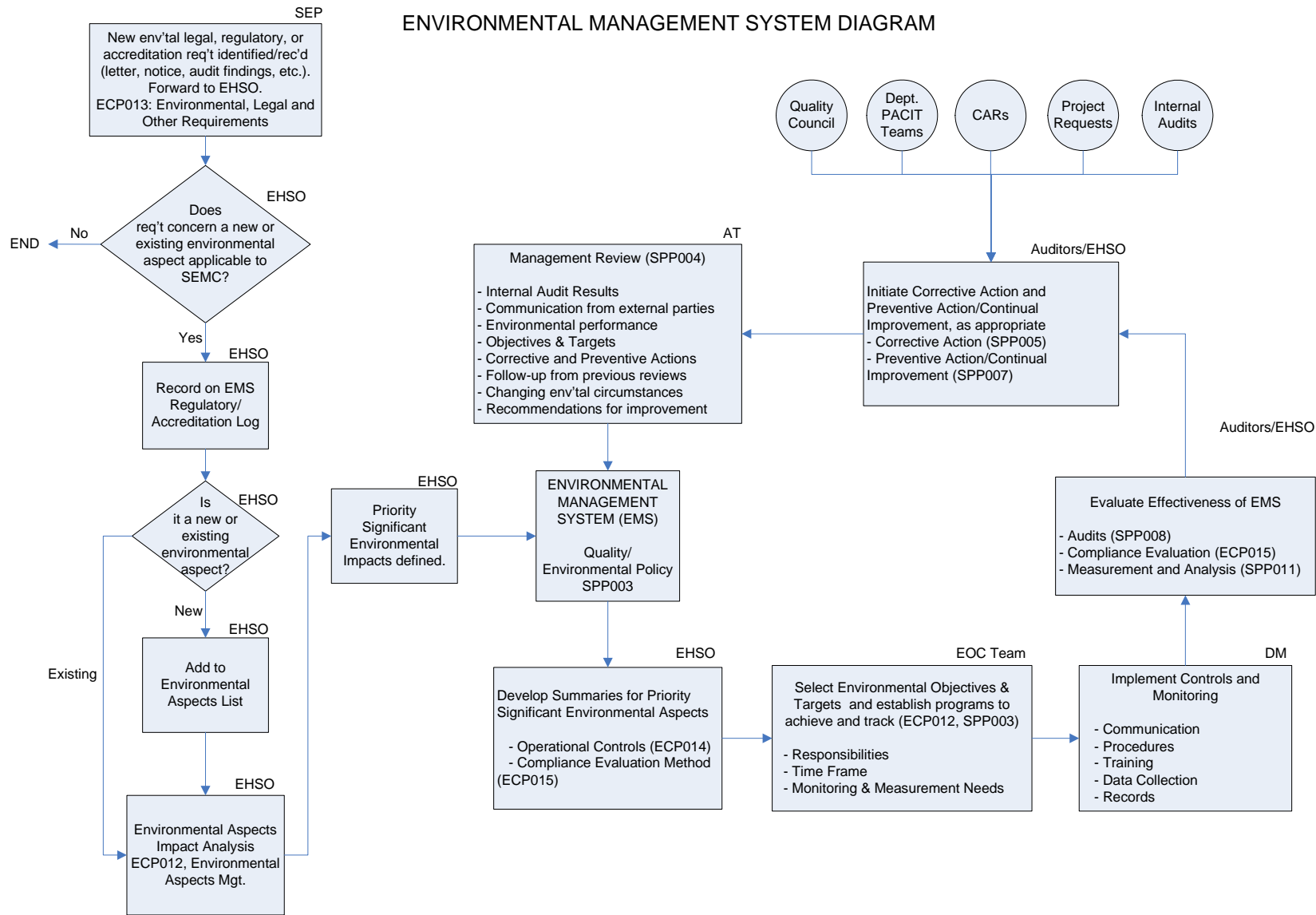
<b>ISO 14000.2004 REQUIRED ELEMENT</b>	<b>ST. ELIZABETH MEDICAL CENTER DOCUMENT</b>
<b>4.2 – ENVIRONMENTAL POLICY</b>	Included in SPP003, Quality/Environmental Policy
<b>4.3 – PLANNING</b>	
4.3.1 – Environmental Aspects	ECP012, Environmental Aspects Management <u>Supporting Document</u> – Environmental Aspect List, Environmental Aspect Review Summary
4.3.2 – Legal and Other Requirements	ECP013, Environmental Legal and Other Requirements; ECI024, EMS Project Review <u>Supporting Documents</u> - EMS Regulatory/Accreditation Correspondence Log, Environmental Legal and Other Requirements Table
4.3.3 – Objectives, Targets and Program(s)	ECP012, Environmental Aspects Management – establishing objectives and targets <u>Supporting Documents</u> - Environmental Objectives and Targets table, Environmental Aspect Review Summary, Environmental Management Programs
<b>4.4 – IMPLEMENTATION &amp; OPERATION</b>	
4.4.1 – Resources, Roles, Responsibilities and Authority	ECP020, Environmental Management System Roles and Responsibilities; <u>Supporting Document</u> - Environmental Management Representative Statement of Authority
4.4.2 – Competence, Training and Awareness	ECP018, Environmental Competency, Education and Awareness <u>Supporting Document</u> – Critical Environmental Employees Training Matrix
4.4.3 – Communication	SPP082, Communications Management Plan
4.4.4 – Documentation	ECP005, Environmental Management System Manual ( <i>this document</i> )
4.4.5 – Control of Documents	SPP020, Documentation Management; ECP013, Environmental Legal and Other Requirements
4.4.6 – Operational Control	ECP014, Environmental Operational Controls SPP026, Project Management
4.4.7 – Emergency Preparedness and Response	TPP001, Emergency Preparedness Plan
<b>4.5 – CHECKING</b>	
4.5.1 – Monitoring and Measurement	SPP011, Measurement and Analysis SPP032, Control of Inspection, Measurement and Test Equipment
4.5.2 – Evaluation of Compliance	ECP015, Environmental Compliance Evaluation
4.5.3 – Nonconformity, Corrective Action and Preventive Action	SPP005, Corrective Action SPP007, Preventive Action/Continual Improvement
4.5.4 – Control of Records	SPP010, Records Management ECP019, Environmental Record Retention <u>Supporting Document</u> – Environmental Records Retention Matrix
4.5.5 – Internal Audit	SPP008, Internal Quality Audits
<b>4.6 – MANAGEMENT REVIEW</b>	SPP04, Management Reviews



Number.Revision: ECP005.004	Effective Date: 12/11/08
Replaces Number.Revision: ECP005.003	Replaces Date: 10/3/06
Page 3 of 4	

# ENVIRONMENTAL MANAGEMENT SYSTEM MANUAL

## ENVIRONMENTAL MANAGEMENT SYSTEM DIAGRAM





Number.Revision: ECP005.004	Effective Date: 12/11/08
Replaces Number.Revision: ECP005.003	Replaces Date: 10/3/06
Page 4 of 4	

## ENVIRONMENTAL MANAGEMENT SYSTEM MANUAL

### 5) REFERENCES

ISO 14001: 2004, Environmental management systems – Requirements with guidance for use (hardcopy available from the EHSO or Quality Manager)

### 6) RECORDS

None

### 7) AUTHORIZING DOCUMENT

SPP046, Environment of Care Management Plan

COORDINATED WITH: Environment of Care Team

APPROVED BY: Tom Corp 10/3/06  
Environmental, Health & Safety Officer Date