



On-Demand
Foundations of Catholic Health Care Leadership

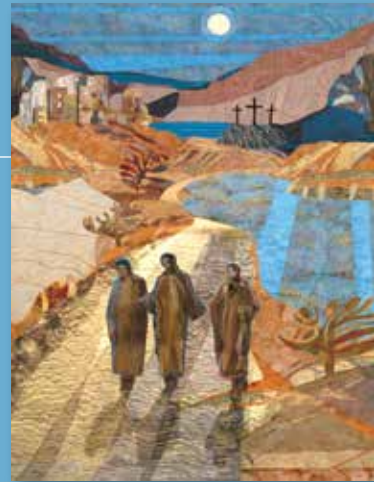
COVER ARTWORK

"The Road to Emmaus," Mike Torevell.

Used with permission.

Now on that same day two of them were going to a village called Emmaus, about seven miles from Jerusalem, and talking with each other about all these things that had happened. While they were talking and discussing, Jesus himself came near and went with them, but their eyes were kept from recognizing him. And he said to them, "What are you discussing with each other while you walk along?" They stood still, looking sad. Then one of them, whose name was Cleopas, answered him, "Are you the only stranger in Jerusalem who does not know the things that have taken place there in these days?" He asked them, "What things?"

When he was at the table with them, he took bread, blessed and broke it, and gave it to them. Then their eyes were opened, and they recognized him; and he vanished from their sight.



They said to each other, "**Were not our hearts burning within us** while he was talking to us on the road, while he was opening the scriptures to us?" That same hour they got up and returned to Jerusalem; and they found the eleven and their companions gathered together. They were saying, "The Lord has risen indeed, and he has appeared to Simon!" Then they told what had happened on the road, and how he had been made known to them in the breaking of the bread.

New Revised Standard Version Luke 24: 13-19 / 30-35

"The Road to Emmaus" artwork is a paradigmatic image for the formational process — the oftentimes confused information we have to deal with (head), the gradual and even dramatic change that can take place when we "see" and allow the Spirit into our being (heart), and how this can become a transformational process whereby we want to share, and be of love and service to all others, and in the world (feet or hands).

On-Demand Foundations of Catholic Health Care Leadership

An Online Course for Formation and Development

Designed for Leaders Like You!

CHA's new *On-Demand Foundations of Catholic Health Care Leadership* is always available for new and current leaders in Catholic health care. This program provides executives, board members, directors, managers, clinicians and other leaders in Catholic health care with a foundation in core theological and ethical principles that are at the heart of the Catholic health ministry.

Considered an essential primer for new and current leaders in Catholic health care, the program deepens understanding of the pivotal role leaders play in carrying out the healing mission of Catholic health care in serving the needs of patients, families, communities and the common good.

Engaging Experience

Supported by a local dialogue partner, participants work the program at their own pace integrating new content, engaging reflective questions and building new leadership practices for their roles across the ministry. Each session focuses on a key principle of Catholic health care leadership to give participants an in-depth understanding of core principles of Catholic health care.

The comprehensive curriculum encompasses leadership, formation, spirituality and whole person care, Catholic social tradition, theology, mission, ethics and the *Ethical and Religious Directives for Catholic Health Care Services*, sponsorship, community benefit, global health, advocacy, and discernment in decision making.

The course is organized into 11 modules, with an introductory overview and conclusion specific to on-going formation. Each module follows a similar structure beginning with an overview and reflection, and then a combination of specifically created feature presentation videos from seasoned experts, combined with relevant articles, culminating in a final assignment which each participant completes.

The program is sequential, and you are required to complete each segment before moving to the next one. You are encouraged to take notes in your journal as you move through the sections, to deepen your learning and to help you complete the final assignment. Once completed this work will be received by your designated local dialogue partner and they will be in communication with you.

Participate as a Group or Individually

You may participate either with a group of colleagues from your own system or facility or as an individual. Over the years, many registrants have found that participating as a group is a great way to foster team building and to apply learnings to their daily work.

Registration

- CHA members: \$500 per person
- Non-CHA members: \$1,100 per person

Program Overview

This Program Will Benefit:

- Executives
- Board members
- Directors
- Managers and middle managers
- HR staff
- Administrators
- Physicians, nurses and clinical staff
- Pastoral care staff
- Communications and marketing staff
- Persons serving in leadership of partners organizations
- Sponsor members

Curriculum

The curriculum weaves biblical, theological and spiritual aspects of health care ministry in a model that incorporates adult learning methods within a framework of ministry formation and development.

Modules

Module One: Vocation of Leadership in Catholic Health Care

The objective is to enable participants to articulate what it means to be called to be a leader in Catholic health care. Themes include:

- ▶ We all know we have a job and for many it's a career, but what does it mean to think of our work as a vocation?
 - ▶ What does it mean to be called to be leader in Catholic health care?
 - ▶ How does cultivating a vocational attitude change how we are as a leader and how we are perceived by others in our leadership?
-

Module Two: The Tradition of Catholic Health Care

The objective is to enable participants to express the relationship of the healing ministry of Jesus Christ to the foundation and work of Catholic health care. Themes include:

- ▶ What are the implications of describing “the healing ministry of Jesus” as the foundation of our ministry?
 - ▶ What are the foundational healing stories for the Catholic health ministry?
 - ▶ What is the role of sacred Scripture as a spiritual touchstone for leaders?
-

Module Three: Spirituality and Leadership

The objective is for participants to understand the importance and the central role of spirituality in Catholic health care. Themes include:

- ▶ What is whole person care?
 - ▶ What is the place of spirit within this understanding of what it means to be human?
 - ▶ What are the spiritual needs of a person, and how do we respond to these needs in our work?
-

Module Four: Spirituality and the Practice of Prayer

The objective is for participants to understand the significance of spiritual practices in Catholic health care, especially the commitment to cultivating one. Themes include:

- ▶ What are spiritual practices, and how do they get expressed in a diverse and pluralistic workplace?
 - ▶ What are you already doing in your life that is contemplative, or what might you consider taking up as a practice?
 - ▶ What are the benefits of meditation and contemplation?
-

Module Five: Catholic Social Teaching: Our Strong Foundation

The objective is to identify foundational concepts in Catholic Social Teaching and their implications for health care leadership. Themes include:

- ▶ What is the Catholic Social Tradition?
 - ▶ What are the pillars of Catholic Social Teaching and why are they so important?
 - ▶ Considering the key principles of this tradition, what are some ethical issues that arise?
-

Module Six: Catholic Social Tradition: Living Our Tradition

The objective is to define and describe the importance of health equity in Catholic health care. Themes include:

- ▶ What do we mean by health equity and the social determinants of health?
 - ▶ What are the social conditions necessary for an individual's dignity to be actualized?
 - ▶ What do you know about how your organization is responding to the needs within your organization?
-

Module Seven: The Foundations of Ethics in Catholic Health Care

The objective is to introduce participants to ethical decision making in Catholic health care, and to the *Ethical and Religious Directives for Catholic Health Care Services (ERDs)* as a leadership resource. Themes include:

- ▶ What do we mean by “ethics” and “morality”?
 - ▶ What are the *Ethical and Religious Directives for Catholic Health Care Services (ERDs)*?
 - ▶ How do the ERDs define the moral and ethical framework for Catholic health care in the United States?
-

Module Eight: Models of the Church: Spirit and Structure

The objective is to enable participants to understand the models and ethos of the Church. Themes include:

- ▶ How do we understand the Church from servant to institution?
 - ▶ As institution, what is the structure of the Church from parish to papacy?
 - ▶ What are some of the church terminologies that are important to leadership in Catholic health care?
-

Module Nine: Models of Sponsorship

The objective is to introduce participants to meaning of sponsorship in Catholic health care today. Themes include:

- ▶ How has sponsorship emerged and evolved into its present structure?
 - ▶ What are sponsors responsible for, how are they structured and how do they live out their role in ministry?
 - ▶ What are some of the hopes and challenges facing sponsors now and into the future?
-

Module Ten: Discernment

The objective is to prepare leaders for role of discernment in all decision making in Catholic health care. Themes include:

- ▶ In what ways is discernment different from decision making?
 - ▶ What does a comprehensive formal ethical discernment involve?
 - ▶ What makes discernment a spiritual discipline requiring a prayerful disposition?
-

Module Eleven: Leadership

The objective is to develop a plan for ongoing development and formation as a ministry leader in Catholic health care. Themes include:

- ▶ In what ways are leaders "culture bearers" who hold the organization's integrity in trust and shape its culture?
 - ▶ How do leaders in Catholic health care use leadership principles as tools for maintaining a distinctive Catholic culture?
 - ▶ What are some core spiritual practices that can strengthen a leader's personal and professional growth?
-

Certificate of Attendance

Please note CHA does not offer Continuing Education Units (CEUs) for any programs.

CHA will provide On-Demand Foundations participants with a Certificate of Attendance indicating contact hours. A Certificate of Attendance will be provided upon request by participants who complete the program.

Participants may submit Certificates of Attendance to relevant organizations that accept proof of contact hours as credit.

These include:

American College of Healthcare Executives: American College of Healthcare Executives (ACHE) members may self-report qualifying CEUs using the contact hour information provided on their CHA Certificate of Attendance. To self-report, log in as a member on the [ACHE site](#); use the link on the left-hand side to self-report applicable contact hours for CEU credit.

NACC Board Certified Chaplains: National Association of Catholic Chaplains (NACC) board certified chaplain members may self-report their continuing education hours (CEHs) using the contact hours information provided on their CHA Certificate of Attendance

For further information regarding Certificates of Attendance, please contact [Danette Thompson](#), (314) 253-3408.

Ministry formation creates experiences that invite those who serve in Catholic health care to discover connections between personal meaning and organizational purpose. These connections inspire and enable participants to articulate, integrate, and implement the foundational elements of Catholic health ministry so that it flourishes now and into the future.



Washington Office

1625 Eye Street NW, Suite 550
Washington, DC 20006
(202) 296-3993

St. Louis Office

4455 Woodson Road
St. Louis, Missouri 63134
(314) 427-2500

CHA Contact:

Diarmuid Rooney, MSP, MTS, D. Soc. Admin
Senior Director, Ministry Formation
drooney@chausa.org | (314) 253-3465