



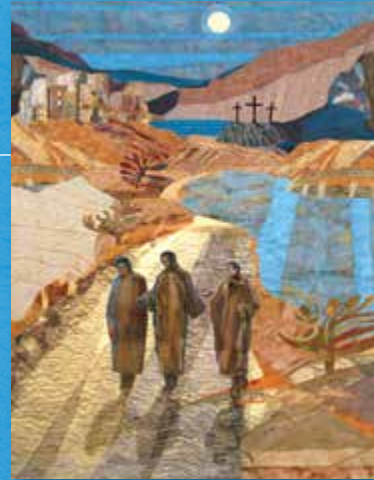
Foundations of Catholic Health Care Leadership Live

JANUARY 30, 2024 – MARCH 21, 2024

COVER ARTWORK

"The Road to Emmaus," Mike Torevell.

Used with permission.



Now on that same day two of them were going to a village called Emmaus, about seven miles from Jerusalem, and talking with each other about all these things that had happened. While they were talking and discussing, Jesus himself came near and went with them, but their eyes were kept from recognizing him. And he said to them, "What are you discussing with each other while you walk along?" They stood still, looking sad. Then one of them, whose name was Cleopas, answered him, "Are you the only stranger in Jerusalem who does not know the things that have taken place there in these days?" He asked them, "What things?"....

When he was at the table with them, he took bread, blessed and broke it, and gave it to them. Then their eyes were opened, and they recognized him; and he vanished from their sight.

They said to each other, "**Were not our hearts burning within us** while he was talking to us on the road, while he was opening the scriptures to us?" That same hour they got up and returned to Jerusalem; and they found the eleven and their companions gathered together. They were saying, "The Lord has risen indeed, and he has appeared to Simon!" Then they told what had happened on the road, and how he had been made known to them in the breaking of the bread.

New Revised Standard Version Luke 24: 13-19 / 30-35

"The Road to Emmaus" artwork is a paradigmatic image for the formational process — the oftentimes confused information we have to deal with (head), the gradual and even dramatic change that can take place when we "see" and allow the Spirit into our being (heart), and how this can become a transformational process whereby we want to share, and be of love and service to all others, and in the world (feet or hands).

Foundations of Catholic Health Care Leadership Live

An Interactive Virtual Course for Formation and Development

January 30 to March 21, 2024

Designed for Leaders Like You!

CHA's *Foundations of Catholic Health Care Leadership* Program provides executives, board members, directors, managers, clinicians and other leaders in Catholic health care with a foundation in core theological and ethical principles that are at the heart of the Catholic health ministry.

Considered an essential primer for new and current leaders in Catholic health care, the program deepens understanding of the pivotal role leaders play in carrying out the healing mission of Catholic health care in serving the needs of patients, families, communities and the common good.

Engaging Virtual Experience

Foundations Live takes place in a series of eight consecutive weekly virtual sessions starting on Thursday, Feb. 1 to March 21, 2024, from 1-3:30 p.m. ET. An orientation session to familiarize participants with the overall program agenda and virtual format is scheduled for Tuesday, January 30, 2024, from 1 – 2 p.m. ET.

Each session features presentations from seasoned experts in key areas of Catholic health care in combination with valuable opportunities for dialogue and networking in breakout sessions and virtual discussions between each session.

The comprehensive curriculum encompasses leadership, formation, spirituality and whole person care, mission, theology, sponsorship, formation, spirituality, ethics and the *Ethical and Religious Directives for Catholic Health Care Services*, the Catholic social tradition and its application to the environment, community benefit, global health, advocacy, and discernment in decision-making.

Each session focuses on a key principle of Catholic health leadership to give participants an in depth understanding of core principles of Catholic health care. Since each session builds on each other, registrants are expected to participate in all eight sessions to benefit fully from the program. Relevant reading materials and information for group discussions are provided prior to each session.

Participate as a Group or Individually

You are free to participate either with a group of colleagues from your own system or facility or as an individual. Over the years, many registrants have found that participating as a group is a great way to foster team building and to apply learnings to their daily work. Individuals will participate in the program with a group of individuals from other locations to foster interaction and group discussion.

Registration

- CHA Members*: \$295/\$590 per person
- Non-Members: \$1,180 per person

* CHA Member registration fee is based upon member type. Specific pricing information is available upon registration or by contacting the CHA Service Center at servicecenter@chausa.org for your pricing.

What Participants Say About Foundations Live ...

“This is one of the best, most in-depth and inspiring leadership courses I have ever taken part in.”

“My biggest takeaway from this program is that we as a collective, have a much greater responsibility to the community and the people we serve. We have a chance to make a difference, one word, one gesture, and one giving moment at a time. Through compassion, consideration and selflessness we all have a chance to be better as individuals and lead by example to foster change.”

“I am transformed.”

“Every session was filled with content inspiring me to reflect on my role in Catholic health care and be even more grateful for my journey.”

“I have become more equipped and empowered. This has made me think of my life and role as a leader in a new light, with different perspective on how I can be more effective in all phases of life.”

“The lessons in leadership here can be built upon for years to come.”

“Not being Catholic, learning the social traditions was great. I now have had a light shed on my organization and why we do what we do the way we do.”

“I am now able to articulate the mission of Catholic health care and translate these learnings into action.”

**“A retreat! I felt like I went on a retreat!
Very powerful and thought-provoking.”**

“Extremely practical information, both personally and professionally. It is truly foundational, not only to what we do but also to who we are.”

“So many insights and learning opportunities, like reading a good book.”

“Formation never ends.
This helped me get back to focusing on that is important.”

“This has been an incredible gift.”

Presenters



Lori Ashmore-Ruppel, MAPS
Director, Sponsor Services
CHA, St. Louis



Darren Henson, Ph.D., S.T.L.
Senior Director, Ministry Formation
CHA, St. Louis



Bruce Compton
Senior Director, Global Health
CHA, St. Louis



Nathaniel Blanton Hibner, MTS, Ph.D.
Senior Director, Ethics
CHA, St. Louis



Jill Fisk, MATM
Director, Mission Services
CHA, St. Louis



Nancy Lim, MPH, BSN
Director,
Community Health Improvement
CHA, Washington, D.C.



Dennis Gonzales, Ph.D.
Senior Director,
Mission Innovation & Integration
CHA, St. Louis



Diarmuid Rooney, M.S.Psych., M.T.S., D.Soc.Admin.
Vice President,
Sponsorship & Mission Services
CHA, St. Louis



Sr. Mary Haddad, RSM, MSW, MBA
President and Chief Executive Officer
CHA, Washington, D.C.



Indu Spugnardi
Director, Advocacy
& Resource Development
CHA, Washington, D.C.

Program Director

Darren Henson, Ph.D., S.T.L.
Senior Director, Ministry Formation
CHA, St. Louis

Co-host

Lori Ashmore-Ruppel, MAPS
Director, Sponsor Services
CHA, St. Louis

Program Overview

This Program Will Benefit:

- Executives
- Sponsor and Board members
- Directors
- Managers and Supervisors
- HR staff
- Administrators
- Physicians, nurses and clinical staff
- Pastoral care staff
- Communications and marketing staff
- Persons serving in leadership of partner organizations

CURRICULUM

The curriculum weaves biblical, theological and spiritual aspects of health care ministry in a model that incorporates adult learning methods within a framework of ministry formation and development.

ORIENTATION — TUESDAY, JAN. 30, 2024, 1-2 P.M. ET

Co-host Darren Henson and Lori Ashmore-Ruppel

Will demonstrate features of the virtual platform that will be used throughout the program, how breakout sessions will be handled, and answer any questions. The orientation will also provide an introduction to CHA and the programs and services available to members who work in Catholic health organizations. Participants will receive a helpful glossary of Catholic health terminology.

SESSION ONE – THURSDAY, FEB. 1 | 1-3:30 P.M. ET

Leadership in Catholic Health Care

Sr. Mary Haddad, RSM

The objective is to enable participants to articulate important challenges for Catholic health care and their implications for leaders of the ministry. Themes include:

- ▶ What are the important opportunities and challenges on the horizon for Catholic health care and their implications for leaders of this ministry?
- ▶ What do we mean when we say health care is a ministry?
- ▶ What is the relationship of Catholic health care to the broader ministry of the church, including the heritage of the religious women and men who founded and nurtured the health ministry in the United States?

Jesus, The Foundation of Catholic Health Care

Jill Fisk

The objective is to enable participants to express the relationship of the healing ministry of Jesus Christ to the foundation and work of Catholic health care. Themes include:

- ▶ What are the implications of describing “the healing ministry of Jesus” as the foundation of our ministry and their implications for leaders of this ministry?
- ▶ How do we understand Jesus as a healer of whole persons and what are some foundational stories for the Catholic health ministry?
- ▶ What is the role of sacred Scripture as a spiritual touchstone for leaders?

SESSION TWO – THURSDAY, FEB. 8 | 1-3:30 P.M. ET

Spirituality, Prayer and Reflection

Diarmuid Rooney

The objective is for participants to understand the importance of whole person care and the central role of spirituality in Catholic health care. Themes include:

- ▶ What is the place of spirit within this understanding of what it means to be human?
- ▶ What are the spiritual dimensions of a person, and how do we respond to these needs in our work?
- ▶ What is whole person care?
- ▶ What are spiritual practices, and how do they get expressed in a diverse and pluralistic workplace?

SESSION THREE – THURSDAY, FEB. 15 | 1-3:30 P.M. ET

Catholic Social Tradition

Darren Henson

The objective is to identify foundational concepts in Catholic Social Teaching and their implications for health care leadership. Themes include:

- ▶ What is the Catholic Social Tradition and what are its roots?
- ▶ What are major themes of the tradition that impact health care ministry?
- ▶ Why is there a particular emphasis on those who are poor and vulnerable?

SESSION FOUR – THURSDAY, FEB. 22 | 1-3:30 P.M. ET

Community Benefit: Catholic Social Tradition in Action

Nancy Lim

The objective is to define and describe the importance of community benefit and global health in Catholic health and their connection to the Catholic social tradition. Themes include:

- ▶ What do we mean by community benefit and the social determinants of health?
- ▶ What are the social conditions necessary for an individual's dignity to be actualized?
- ▶ What do you know about how your organization is responding to the needs within your organization?

Global Health: Catholic Social Tradition in Action

Bruce Compton

- ▶ Catholic health care has always transcended national boundaries. In today's global environment, how has global health taken on new importance rooted in the imperative to preach the Gospel to the "ends of the earth?"
- ▶ How are CHA's outreach activities supporting members, partnering organizations and the Church?
- ▶ How do you think you can enhance your own and your organization's global health activities?

SESSION FIVE – THURSDAY, FEB. 29 | 1-3:30 P.M. ET

Ethics and the Catholic Moral Tradition

Nathaniel Blanton Hibner

The objective is to introduce participants to classic approaches to moral reasoning and to the Catholic moral tradition. Themes include:

- ▶ What do we mean by “ethics” and “morality”?
- ▶ What are the four classic ways of moral reasoning?
- ▶ What are the sources of the Catholic moral and ethics tradition, and what is the impact on health care operations today?

The Ethical and Religious Directives

Nathaniel Blanton Hibner

The objective is to introduce the Ethical and Religious Directives for Catholic Health Care Services (ERDs) as a leadership resource and to articulate a basic process for ethical decision-making in the health care setting. Themes include:

- ▶ What are the Ethical and Religious Directives for Catholic Health Care Services (ERDs)?
- ▶ How do the ERDs relate to the Catholic social tradition, and how do they define the moral and ethical framework for Catholic health care in the United States?
- ▶ How does our understanding of ethics play out in provider/patient relationships and in specific issues at the beginning and end of life?



Stewarding Our Culture and Identity

Dennis Gonzales

The objective is to develop a plan for ongoing development and formation as a ministry leader in Catholic health care. Themes include:

- ▶ In what ways are leaders “culture bearers” who hold the organization’s integrity in trust and shape its culture?
- ▶ How do leaders in Catholic health care use leadership principles as tools for maintaining a distinctive Catholic culture?
- ▶ What are some core spiritual practices that can strengthen a leader’s personal and professional growth?

Stewarding the Gift of Creation: A Mission and Health Imperative

Indu Spugnardi

The objective is to introduce participants to the Catholic tradition’s understanding of caring for creation and its implications for Catholic health care’s environmental sustainability, community health, and social justice efforts. Themes include:

- ▶ What are the main themes in Pope Francis’ encyclical ‘Laudato Si’?
- ▶ Why is the Catholic health ministry called to care for creation, from both a mission and provider perspective?
- ▶ What does it look like to serve as stewards of creation?



SESSION SEVEN – THURSDAY, MARCH 14 | 1-3:30 P.M. ET

Models of the Church: Spirit and Structure

Darren Henson

The objective is to enable participants to understand the models and ethos of the church.

Themes include:

- ▶ How do we understand the church from servant to institution?
- ▶ As institution, what is the structure of the church from parish to papacy?
- ▶ Why is the mystical dimension of the church important to leadership in Catholic health care?

Sponsorship Today

Lori Ashmore-Ruppel

The objective is to introduce participants to meaning of sponsorship in Catholic health care today.

Themes include:

- ▶ How has sponsorship emerged and evolved into its present structure?
- ▶ What are sponsors responsible for, how are they structured and how do they live out their ministry?
- ▶ What are some of the hopes and challenges facing sponsors now and into the future?



Integration, Discernment, and Human Flourishing

Diarmuid Rooney

The objective is to prepare leaders to integrate and apply the themes and concepts explored in Foundations to their work, leadership, and organizational strategy. It will highlight discernment in decision-making when values-based methods are insufficient. Themes include:

- ▶ How and where can leaders integrate this content into their leadership?
- ▶ What is discernment, and why does it matter?
- ▶ How is discernment an individual and communal spiritual practice?

Human Flourishing and Continuing the Formation Journey

Darren Henson and Lori Ashmore-Ruppel

The objective is to integrate and apply the themes and concepts explored in Foundations. present ongoing formation opportunities, both personally and professionally, through CHA offerings and other local and national initiatives. Themes include:

- ▶ What is human flourishing for us as individuals and through the lens of the Catholic tradition?
- ▶ How to remain connected to ministry formation and why it matters as leaders of Catholic health care ministries?



Certificate of Attendance

Please note CHA does not offer Continuing Education Units (CEUs) for any programs.

CHA will provide all Foundations Live participants with a Certificate of Attendance indicating contact hours at the conclusion of the program. All program registrants will receive an email with a link to the overall evaluation as well as information regarding the Certificate of Attendance.

Participants may submit Certificates of Attendance to relevant organizations that accept proof of contact hours as credit. These include:

American College of Healthcare Executives: American College of Healthcare Executives (ACHE) members may self-report qualifying CEUs using the contact hour information provided on their CHA Certificate of Attendance. To self-report, log in as a member on the [ACHE site](#); use the link on the left-hand side to self-report applicable contact hours for CEU credit.

NACC Board Certified Chaplains: National Association of Catholic Chaplains (NACC) board certified chaplain members may self-report their continuing education hours (CEHs) using the contact hours information provided on their CHA Certificate of Attendance

For further information regarding Certificates of Attendance, please contact [Danette Thompson](#), (314) 253-3408.

Registration FAQs

Is the registration fee per person or per site?

The registration fee is per person. If a group is attending from the same location, the registration fee applies to each person who registers for the program. Each participant must register individually.

Can I purchase individual sessions?

This is a formation program that builds on each session. As a result, it is offered as an integrated, eight- week program. Individual sessions are not available separately.

Program Details

Attendance

This program is designed to provide ample time for small group discussions so participants may gain knowledge from presenters and one another. To ensure that the small groups become a forum for networking and sharing information and experiences, registrants must participate in all sessions.

Sessions are recorded and are made available to registrants the week after the session. This is done as a courtesy for anyone who cannot attend a live presentation due to an unexpected absence. In no way should the recordings be used to take the place of attending the live presentation and participating in the small group discussions.

Individual and Group Attendance

The online course provides a valuable educational and formation experience for individuals and teams of participants from the same facility/location. The difference in the experience for the individual participant versus persons in a group at the same location is in the small group discussions. Individuals will be connected with other individual registrants from across the country in a small group that is developed for individual participants.

Participation as Part of a Group

Many organizations use this virtual program as an opportunity for team building and education and to augment their own formation programs. Executive teams and/or department leads or other groups can register and then attend together in one room using one computer and one phone line. Based on experience over the years, we recommend that the group does not exceed eight persons. If two or three individuals attend from one location, CHA will assign them to a small group that will include participants from other locations.

Participation as an Individual

Individual registrants can participate from anywhere. They are assigned to small groups and then connect via phone to other members of their small group. Participants in previous programs have indicated that connections they made with members of the group continued well after the online program concluded. To foster team building within a system, CHA assigns individuals from facilities within the same system to the same small group.

Cancellation Policy

To cancel your registration, contact the CHA Service Center at servicecenter@chausa.org or call (800) 230-7823.

- A refund of the full registration fee will be given for cancellations received through January 17, 2024.
 - A refund of 75% of the registration fee will be given for cancellations received after January 17, 2024.
- There is no additional charge for substitute registrants.

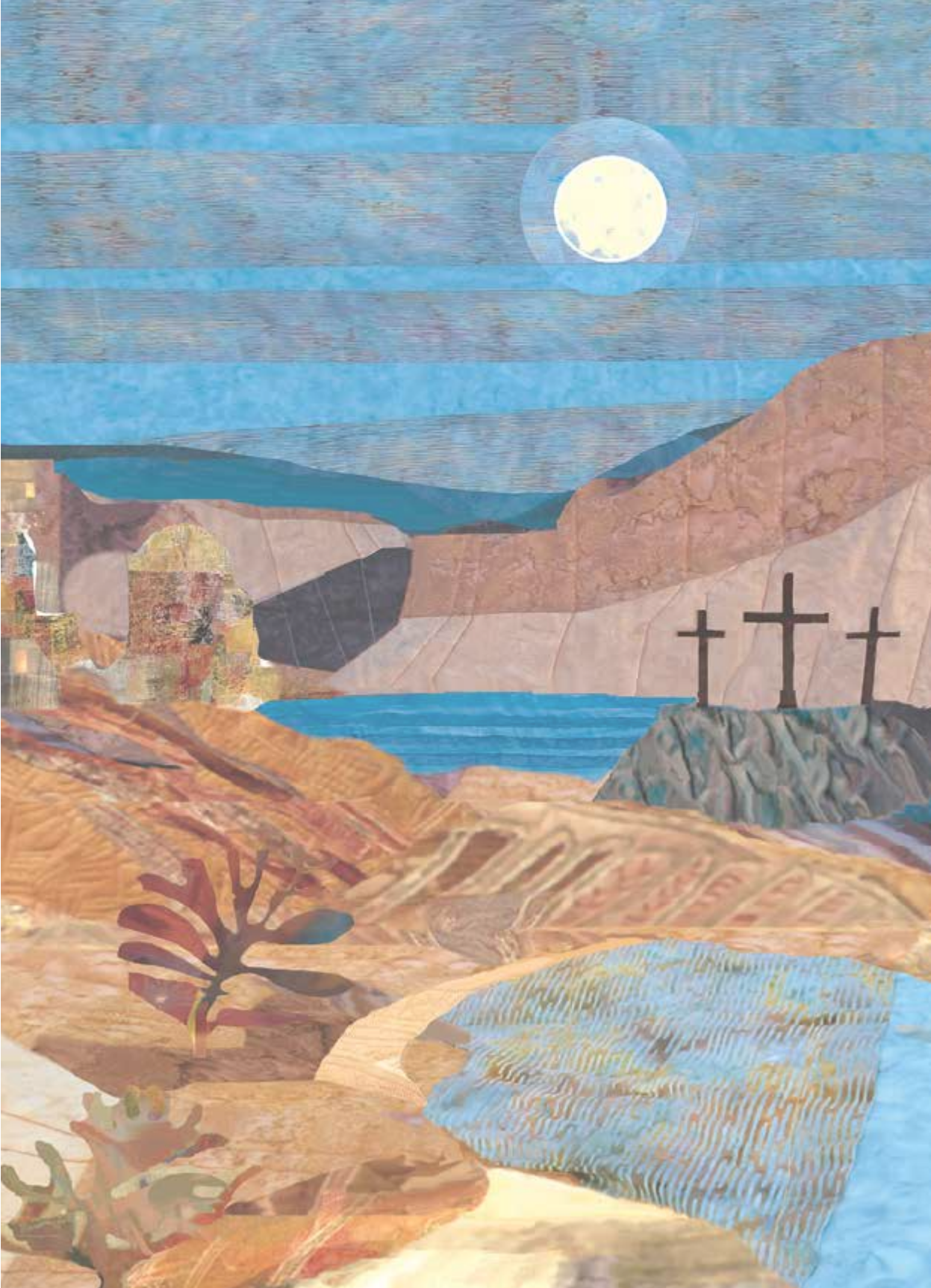
Notices

The right to change speakers or to modify the program content is reserved by CHA.

During the meeting, you may be recorded by CHA staff or its designated contractor. By your attendance or participation at the meeting, you agree that CHA may copy, record and/or distribute in any such form your participation and involvement in any meeting session, activity or event.

No persons or organizations other than CHA or its designated contractor may audiotape any portion of the meeting without prior written permission of CHA.

CHA reserves the right to decline registrations and to refund fees.



Ministry formation creates experiences that invite those who serve in Catholic health care to discover connections between personal meaning and organizational purpose. These connections inspire and enable participants to articulate, integrate, and implement the foundational elements of Catholic health ministry so that it flourishes now and into the future.



Washington Office

1625 Eye Street NW, Suite 550
Washington, DC 20006
(202) 296-3993

St. Louis Office

4455 Woodson Road
St. Louis, Missouri 63134
(314) 427-2500

CHA Contact:

Darren M. Henson, Ph.D., S.T.L.
Senior Director, Ministry Formation
dhenson@chausa.org | (314) 253-3436